

Create a Gorgeous Thinking of You Card with the Ginkgo Branch Bundle!

Mary Fish
maryfish@stampinpretty.com
<http://stampinpretty.com>



CUT YOUR CARD STOCK - DIMENSIONS:

- Basic White Thick Card Stock:
Card Base – 4 1/4 x 11, scored at 5 1/2
- Basic White Card Stock:
Die-cut sentiment – 3 x 1 3/4 (before die-cutting)
Stamped Layer – 3 3/4 x 5
- Delicate Desert Designer Series Paper:
Layer – 4 x 5 1/4
Die-cut Frame – 2 3/4 x 4 1/4 Adhered to a Foam Adhesive Sheet (before die-cutting)
Envelope Flap – 5 3/4 x 2 1/4

Create a Gorgeous Thinking of You Card with the Ginkgo Branch Bundle!

Mary Fish
maryfish@stampinpretty.com
<http://stampinpretty.com>



1. Begin by burnishing the fold of the card base with a Bone Folder.
2. Adhere the Designer Series Paper to the card base with Stampin' Dimensionals.
3. Use a [Stamparatus](#) to position and stamp the ginkgo images in Cajun Craze Classic Ink onto the Basic White layer (3/4 up from bottom) as shown.
4. Use a [Stampin' Cut & Emboss Machine](#) (Standard or Mini) and the Fabulous Frames Die to crop the Designer Series Paper layer.
5. Remove the backing from the Foam Adhesive Sheet and adhere, framing the ginkgo leaves as shown.
6. Tie of double bow of Gray Granite Baker's Twine Essentials and adhere as shown with a Mini Glue Dot.
7. Use a [Stamparatus](#) to stamp the sentiment in Cajun Craze Classic Ink onto the Basic White layer as shown.
8. Crop with a [Stampin' Cut & Emboss Machine](#) (Standard or Mini) and the coordinating Ginkgo Branch die.
9. Adhere as shown with strategically placed pieces of snipped-to-size Foam Adhesive Sheet.
10. **POP OF PERSONALITY!** Embellish with three white Adhesive-Backed Milky Dots.
11. **PERFECT POLISH!** Use Multipurpose Liquid Glue to adhere the Designer Series Paper to the outside flap of a Basic White Medium Envelope. You can see my video demonstration with tips on adding designer paper to an envelope flap [here](#).

Create a Gorgeous Thinking of You Card with the Ginkgo Branch Bundle!

Mary Fish
maryfish@stampinpretty.com
<http://stampinpretty.com>

Mary Fish
Independent
Stampin' UP! Demonstrator

click for blog post

click to shop

Create a Gorgeous Thinking of You Card with the Ginkgo Branch Bundle!

Mary Fish

maryfish@stampinpretty.com

<http://stampinpretty.com>



Ginkgo Branch
Bundle (English) -
160469

Price: \$53.00

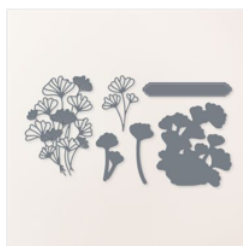
Add to Cart



Ginkgo Branch
Cling Stamp Set
(English) - 160463

Price: \$23.00

Add to Cart



Ginkgo Branch
Dies - 160468

Price: \$36.00

Add to Cart



Delicate Desert
12" X 12" (30.5 X
30.5 Cm) Designer
Series Paper -
160521

Price: \$12.00

Add to Cart



Basic White 8-1/2"
X 11" Thick
Cardstock -
159229

Price: \$8.75

Add to Cart



Basic White 8-1/2"
X 11" Cardstock -
159276

Price: \$10.25

Add to Cart



Bone Folder -
102300

Price: \$7.00

Add to Cart



Paper Trimmer -
152392

Price: \$25.00

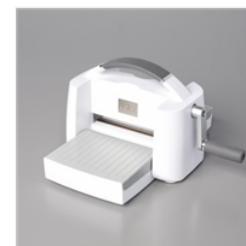
Add to Cart



Stamparatus -
146276

Price: \$49.00

Add to Cart



Stampin' Cut &
Emboss Machine -
149653

Price: \$125.00

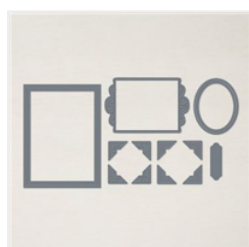
Add to Cart



Mini Stampin' Cut
& Emboss
Machine - 150673

Price: \$63.00

Add to Cart



Fabulous Frames
Dies - 159163

Price: \$31.00

Add to Cart



Stampin'
Dimensionals -
104430

Price: \$4.25

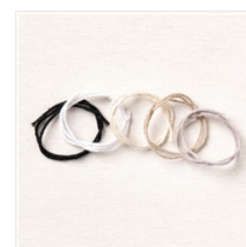
Add to Cart



Stampin' Seal -
152813

Price: \$8.00

Add to Cart



Baker's Twine
Essentials Pack -
155475

Price: \$11.00

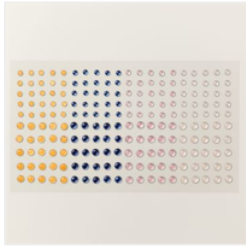
Add to Cart

Create a Gorgeous Thinking of You Card with the Ginkgo Branch Bundle!

Mary Fish

maryfish@stampinpretty.com

<http://stampinpretty.com>



Adhesive-Backed
Milky Dots -
160582

Price: \$8.00

Add to Cart



Cajun Craze
Classic Stampin'
Pad - 147085

Price: \$8.00

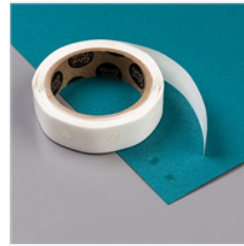
Add to Cart



Foam Adhesive
Sheets - 152815

Price: \$8.00

Add to Cart



Mini Glue Dots -
103683

Price: \$5.25

Add to Cart



Basic White
Medium Envelopes
- 159236

Price: \$7.50

Add to Cart