

# Create a Card with 1" Strips of Favored Flowers DSP

Mary Fish

[maryfish@stampinpretty.com](mailto:maryfish@stampinpretty.com)

<http://stampinpretty.com>



## CUT YOUR CARD STOCK - DIMENSIONS:

- Blackberry Bliss Card Stock:  
Card Base – 4 1/4 x 11, scored at 5 1/2
- Fresh Freesia Card Stock:  
Layer – 4 x 5 1/4
- Basic White Card Stock:  
Stamped Sentiment – 2 1/2 x 1/2  
Layer – 4 1/4 x 5 1/2 (final cut to 3 3/4 x 5)
- Favored Flowers Designer Series Paper:  
Strips – 1 x 5 (qty 4)  
Strips – 1 x 3 (qty 4)  
Envelope Flap – 5 3/4 x 2 1/4

# Create a Card with 1" Strips of Favored Flowers DSP

Mary Fish

[maryfish@stampinpretty.com](mailto:maryfish@stampinpretty.com)

<http://stampinpretty.com>



1. Begin by burnishing the fold of the card base with a Bone Folder.
2. Adhere the Fresh Freesia layer to the base with Stampin' Dimensionals.
3. Adhere the 1 strips of designer series paper to the Basic White layer as shown with Multipurpose Liquid Glue.
4. I adhered these four strips first, then just filled it in from there. **TIP:** Use Multipurpose Liquid Glue. It's forgiving and allows you to get the perfect placement before it dries.
5. Use a Paper Trimmer to cut the layer to 3 3/4 x 5. Adhere to the card with Stampin' Seal.
6. Use a [Stamparatus](#) to position and stamp the sentiment in Blackberry Bliss Classic Ink onto the Basic White piece.
7. Flag the end with the Banners Pick-a-Punch. Adhere to the card with Stampin' Dimensionals.
8. Tie a bow of white Baker's Twine Essentials. Adhere as shown with a Mini Glue Dot.
9. **POP OF PERSONALITY!** Embellish with a single Petal Pink Adhesive-Backed Milky Dots.
10. **PERFECT POLISH!** Use Multipurpose Liquid Glue to adhere the Designer Series Paper to the outside flap of a Basic White Medium Envelope. You can see my video demonstration with tips on adding designer paper to an envelope flap [here](#).

Mary Fish  
Independent  
Stampin' UP! Demonstrator

# Create a Card with 1" Strips of Favored Flowers DSP

Mary Fish

[maryfish@stampinpretty.com](mailto:maryfish@stampinpretty.com)

<http://stampinpretty.com>

click for blog post

click to shop

# Create a Card with 1" Strips of Favored Flowers DSP

Mary Fish

[maryfish@stampinpretty.com](mailto:maryfish@stampinpretty.com)

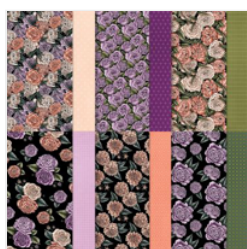
<http://stampinpretty.com>



Thanks A Bunch  
Photopolymer  
Stamp Set  
(English) - 160816

Price: \$0.00

[Add to Cart](#)



Favored Flowers  
12" X 12" (30.5 X  
30.5 Cm) Designer  
Series Paper -  
160833

Price: \$0.00

[Add to Cart](#)



Basic White 8-1/2"  
X 11" Cardstock -  
159276

Price: \$10.25

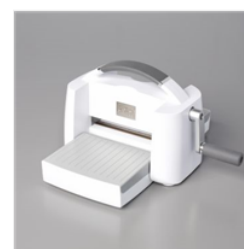
[Add to Cart](#)



Paper Trimmer -  
152392

Price: \$25.00

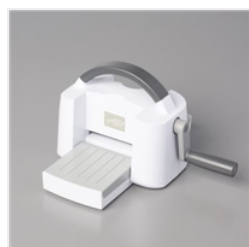
[Add to Cart](#)



Stampin' Cut &  
Emboss Machine -  
149653

Price: \$125.00

[Add to Cart](#)



Mini Stampin' Cut  
& Emboss  
Machine - 150673

Price: \$63.00

[Add to Cart](#)



Stamparatus -  
146276

Price: \$49.00

[Add to Cart](#)



Bone Folder -  
102300

Price: \$7.00

[Add to Cart](#)



Stampin'  
Dimensionals -  
104430

Price: \$4.25

[Add to Cart](#)



Multipurpose  
Liquid Glue -  
110755

Price: \$4.00

[Add to Cart](#)



Blackberry Bliss 8-  
1/2" X 11"  
Cardstock -  
133675

Price: \$9.25

[Add to Cart](#)



Fresh Freesia 8-  
1/2" X 11"  
Cardstock -  
155613

Price: \$9.25

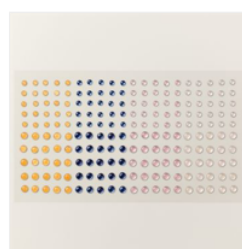
[Add to Cart](#)



Basic White  
Medium Envelopes  
- 159236

Price: \$7.50

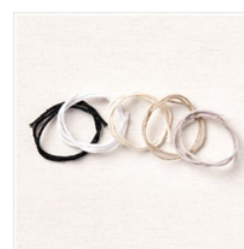
[Add to Cart](#)



Adhesive-Backed  
Milky Dots -  
160582

Price: \$8.00

[Add to Cart](#)



Baker's Twine  
Essentials Pack -  
155475

Price: \$11.00

[Add to Cart](#)