

SIMPLE & STEPPED-UP!

Decorated with Happiness Holiday Cards!

Mary Fish
stampinpretty@gmail.com
<http://stampinpretty.com>



CUT YOUR CARD STOCK - DIMENSIONS:

- Basic White Thick Card Stock:
Card Base – 4 1/4 X 11, scored at 5 1/2
- Mossy Meadow 6x6 Designer Series Paper:
Card Layer - 4 x 5 1/4
Envelope Flap - 2 x 5 3/4
- Crumb Cake Card Stock:
Layer - 2 3/4 x 5 1/4
Die-Cuts & Sentiment Layer - 4 x 3 (before cropping)
- Old Olive Card Stock:
Die-Cut Layer - 4 3/4 x 3 1/4
- Real Red Card Stock (stepped-up card only):
Flagged Banner - 4 x 2

SIMPLE & STEPPED-UP!

Decorated with Happiness Holiday Cards!

Mary Fish
stampinpretty@gmail.com
<http://stampinpretty.com>



1. Begin by burnishing the fold of the card base with a Bone Folder.
2. Adhere the Crumb Cake and Mossy Meadow Designer Series Paper layers together and to the card base with Stampin' Seal.
3. Use a [Stampin' Cut & Emboss Machine](#) (Standard) and the detailed Decorated Pine die to crop the Mossy Meadow card stock layer.
4. Adhere a shown with small dots of Multipurpose Liquid Glue (this allows some of the die-cut to flow freely above the paper).
5. Use a [Stamparatus](#) to stamp the sentiment and two ornaments in Mossy Meadow Classic Ink onto the Crumb Cake layer.
6. Crop all three with a [Stampin' Cut & Emboss Machine](#) (Standard) and the coordinating Decorated Pine dies and the 1-5/8 Layering Circle die.
7. **TIP:** After stamping the ornaments, use the small hole on the die stem to be sure the stem is lined up with the stamped image.
8. Adhere to the card as shown with Stampin' Dimensionals.
9. POP OF PERSONALITY! Embellish with Rustic Metallic Adhesive Backed Dots.
10. **THE PERFECT POLISH!** Use Multipurpose Liquid Glue to adhere the Designer Series Paper to the outside flap of a Basic White Medium Envelope. **NOTE:** Since the DSP is slightly smaller than the envelope flap, use a Paper Trimmer to cut the flap to the same size as the DSP.

SIMPLE & STEPPED-UP!

Decorated with Happiness Holiday Cards!

Mary Fish
stampinpretty@gmail.com
<http://stampinpretty.com>



1. Begin by burnishing the fold of the card base with a Bone Folder.
2. Adhere the Crumb Cake and Mossy Meadow Designer Series Paper layers together and to the card base with Stampin' Seal.
3. Use a [Stampin' Cut & Emboss Machine](#) (Standard) and the detailed Decorated Pine die to crop the Mossy Meadow card stock layer.
4. Adhere a shown with small dots of Multipurpose Liquid Glue (this allows some of the die-cut to flow freely above the paper).
5. Flag the end of the Real Red card stock layer as shown with Paper Snips.
6. Wrap with Linen Trim securing with a bow.
7. Adhere to the card with Stampin' Dimensionals.

SIMPLE & STEPPED-UP!

Decorated with Happiness Holiday Cards!

Mary Fish
stampinpretty@gmail.com
<http://stampinpretty.com>



8. Use a [Stamparatus](#) to stamp the sentiment and two ornaments in Mossy Meadow Classic Ink onto the Crumb Cake layer.
9. Crop all three with a [Stampin' Cut & Emboss Machine](#) (Standard) and the coordinating Decorated Pine dies and the 1-5/8 Layering Circle die.
10. **TIP:** After stamping the ornaments, use the small hole on the die stem to be sure the stem is lined up with the stamped image.
11. Adhere to the card as shown with Stampin' Dimensionals.
12. **POP OF PERSONALITY!** Embellish with Rustic Metallic Adhesive Backed Dots.
13. **THE PERFECT POLISH!** Use Multipurpose Liquid Glue to adhere the Designer Series Paper to the outside flap of a Basic White Medium Envelope. **NOTE:** Since the DSP is slightly smaller than the envelope flap, use a Paper Trimmer to cut the flap to the same size as the DSP.

Mary Fish
Independent
Stampin' UP! Demonstrator

click for blog post

click to shop

SIMPLE & STEPPED-UP!

Decorated with Happiness Holiday Cards!

Mary Fish
stampinpretty@gmail.com
<http://stampinpretty.com>



Decorated With
Happiness Bundle
(English) - 159711

Price: \$51.25

Add to Cart



Decorated With
Happiness
Photopolymer
Stamp Set
(English) - 159704

Price: \$23.00

Add to Cart



Decorated Pine
Dies - 159710

Price: \$34.00

Add to Cart



Paper Trimmer -
152392

Price: \$25.00

Add to Cart



Stamparatus -
146276

Price: \$49.00

Add to Cart



Mossy Meadow
Classic Stampin'
Pad - 147111

Price: \$8.00

Add to Cart



Stampin'
Dimensionals -
104430

Price: \$4.25

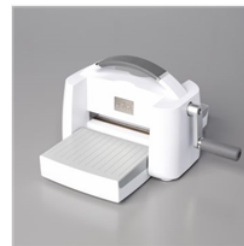
Add to Cart



Bone Folder -
102300

Price: \$7.00

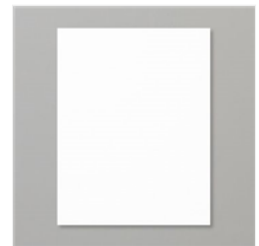
Add to Cart



Stampin' Cut &
Emboss Machine -
149653

Price: \$125.00

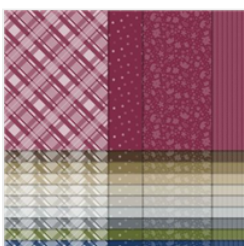
Add to Cart



Basic White 8-1/2"
X 11" Thick
Cardstock -
159229

Price: \$8.75

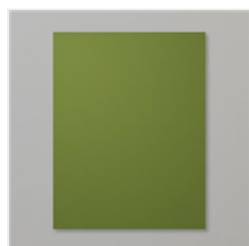
Add to Cart



Neutrals 6" X 6"
(15.2 X 15.2 Cm)
Designer Series
Paper - 159257

Price: \$12.00

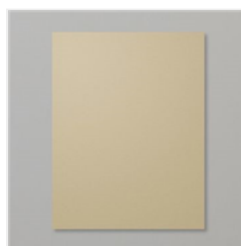
Add to Cart



Mossy Meadow 8-
1/2" X 11"
Cardstock -
133676

Price: \$9.25

Add to Cart



Crumb Cake 8-1/2"
X 11" Cardstock -
120953

Price: \$9.25

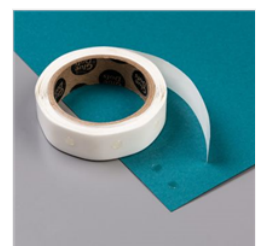
Add to Cart



Real Red 8-1/2" X
11" Cardstock -
102482

Price: \$9.25

Add to Cart



Mini Glue Dots -
103683

Price: \$5.25

Add to Cart

SIMPLE & STEPPED-UP!

Decorated with Happiness Holiday Cards!

Mary Fish
stampinpretty@gmail.com
<http://stampinpretty.com>



Basic White
Medium Envelopes
- 159236

Price: \$7.50

Add to Cart



Linen Thread -
104199

Price: \$5.00

Add to Cart



Multipurpose
Liquid Glue -
110755

Price: \$4.00

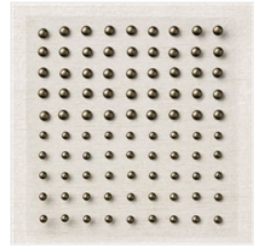
Add to Cart



Paper Snips
Scissors - 103579

Price: \$11.00

Add to Cart



Rustic Metallic
Adhesive-Backed
Dots - 159082

Price: \$8.00

Add to Cart