

Create Quick Matchbook Style Gift Card Holders with Fitting Florets

Mary Fish
stampinpretty@gmail.com
<http://stampinpretty.com>



CUT YOUR CARD STOCK - DIMENSIONS:

- Basic White Thick Card Stock:
Matchbook Base - 3 1/8 x 8 5/8, scored the short distance at 3 3/8, 3 3/4, and 7 3/4.
- Basic White Card Stock:
Celebrate Sentiment - 2 1/8 x 1/2
Jolly Cropped Sentiment - 2 1/4 x 2 1/2 (before cropping)
- Fitting Florets Designer Series Paper:
Small Squares - 1 x 1 (Qty 4)
Gingham - 2 3/4 x 2 1/2

Create Quick Matchbook Style Gift Card Holders with Fitting Florets

Mary Fish
stampinpretty@gmail.com
<http://stampinpretty.com>



PROJECT TUTORIAL - CELEBRATE:

1. Begin by burnishing the folds on the matchbook base with a Bone Folder.
2. Adhere the 1" squares as shown with Stampin' Dimensionals.
3. Use a [Stamparatus](#) to stamp the sentiments in Night of Navy Classic Ink onto the matchbook base and the sentiment strip as shown.
4. Adhere the sentiment strip with Stampin' Seal.
5. Wrap the bottom with a piece of white Baker's Twine Essentials, securing with a bow.
6. Use a mini stapler to staple the two sides and secure the baker's twine to the bottom flap as shown.
7. Embellish the sentiment with a Petal Pink Solid Faceted Gem.

Create Quick Matchbook Style Gift Card Holders with Fitting Florets

Mary Fish
stampinpretty@gmail.com
<http://stampinpretty.com>



PROJECT TUTORIAL - JOLLY:

1. Begin by burnishing the folds on the matchbook base with a Bone Folder.
2. Adhere the gingham DSP as shown with Stampin' Seal.
3. Use a [Stamparatus](#) to stamp the sentiments in Cherry Cobbler Classic Ink onto the matchbook base and the sentiment piece as shown.
4. Use Stampin' Seal + to add a strip to the inside bottom of the front flap. Press to adhere.
5. Use a [Stampin' Cut & Emboss Machine](#) (Standard or Mini) along with the smaller oval Framed Florets Dies to crop the "jolly" sentiment piece.
6. Use a [Stampin' Cut & Emboss Machine](#) (Standard or Mini) along with the flagged Celebrations Tag Die to crop a piece of Cherry Cobbler card stock.
7. Adhere to the back of the sentiment piece with Mini Glue Dots and to the matchbook as shown with Stampin' Dimensionals.
8. Thread a piece of Linen Thread through the hole of a Flat Jingle Bell Trinket, securing with a bow.
9. Adhere the Flat Jingle Bell Trinket to the matchbook with a Mini Glue Dot.
10. **POP OF PERSONALITY!** Embellish the sentiment with small Rustic Metallic Adhesive-Backed Dots.

Mary Fish
Independent
Stampin' UP! Demonstrator

click for blog post

click to shop

Create Quick Matchbook Style Gift Card Holders with Fitting Florets

Mary Fish
stampinpretty@gmail.com
<http://stampinpretty.com>



Stamparatus -
146276

Price: \$49.00

Add to Cart



Bone Folder -
102300

Price: \$7.00

Add to Cart



Basic White 8-1/2"
X 11" Thick
Cardstock -
159229

Price: \$8.75

Add to Cart



Basic White 8-1/2"
X 11" Cardstock -
159276

Price: \$10.25

Add to Cart



Paper Trimmer -
152392

Price: \$25.00

Add to Cart



Multipurpose
Liquid Glue -
110755

Price: \$4.00

Add to Cart



Stampin'
Dimensionals -
104430

Price: \$4.25

Add to Cart



Stampin' Seal -
152813

Price: \$8.00

Add to Cart



Cherry Cobbler 8-
1/2" X 11"
Cardstock -
119685

Price: \$9.25

Add to Cart



Cherry Cobbler
Classic Stampin'
Pad - 147083

Price: \$8.00

Add to Cart



Night Of Navy
Classic Stampin'
Pad - 147110

Price: \$8.00

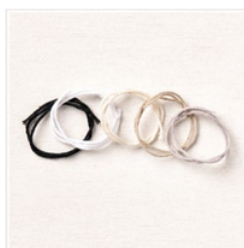
Add to Cart



Linen Thread -
104199

Price: \$5.00

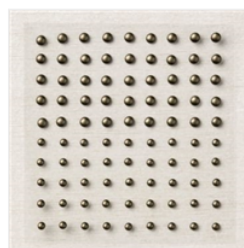
Add to Cart



Baker's Twine
Essentials Pack -
155475

Price: \$11.00

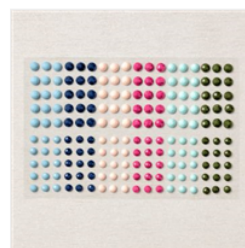
Add to Cart



Rustic Metallic
Adhesive-Backed
Dots - 159082

Price: \$8.00

Add to Cart



Solid Faceted
Gems - 159189

Price: \$8.00

Add to Cart

Create Quick Matchbook Style Gift Card Holders with Fitting Florets

Mary Fish

stampinpretty@gmail.com

<http://stampinpretty.com>



Flat Jingle Bell
Trinkets - 159980

Price: \$7.50

Add to Cart



Mini Stampin' Cut
& Emboss
Machine - 150673

Price: \$63.00

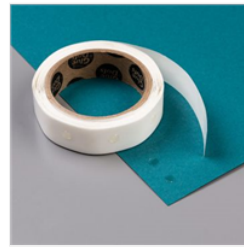
Add to Cart



Stampin' Cut &
Emboss Machine -
149653

Price: \$125.00

Add to Cart



Mini Glue Dots -
103683

Price: \$5.25

Add to Cart