

# Pick of the Crop June 2022 Paper Pumpkin +1

Mary Fish  
[stampinpretty@gmail.com](mailto:stampinpretty@gmail.com)  
<http://stampinpretty.com>



## stampin' pretty

a step-by-step tutorial



**NOTE:** ALL ITEMS NOTED WITH AN \* ARE NOT PART OF THE PAPER PUMPKIN KIT!

1. Use a Paper Trimmer\* to cut a 4 1/4 x 5 1/2 card base of Basic White Thick card stock\*.
2. Use a Paper Trimmer\* to cut the center of an envelope to 4 1/4 x 5 1/2. Adhere to the card base with Stampin' Seal\*.
3. Use a Paper Trimmer\* to cut a card base to 3 1/2 x 5.
4. Double wrap with white Baker's Twine Essentials\*, securing with a bow.
5. Crop the other side of the card base with a [Stampin' Cut & Emboss Machine](#) (Standard or Mini)\* and the largest circle Stylish Shapes Die\*.
6. Stamp the "hello" sentiment in Versamark Ink\* onto the die-cut circle. Cover with white Basics Embossing Powder\*. Set with a Heat Tool\*.

# Pick of the Crop June 2022 Paper Pumpkin +1

Mary Fish  
[stampinpretty@gmail.com](mailto:stampinpretty@gmail.com)  
<http://stampinpretty.com>



7. Adhere both pieces to the card base with dimensionals.

8. **POP OF PERSONALITY!** Embellish with white Classic Matte Dots\*.

Mary Fish  
Independent  
Stampin' UP! Demonstrator



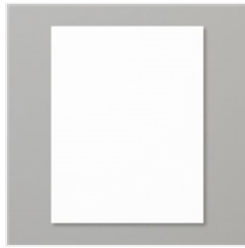
# Pick of the Crop June 2022 Paper Pumpkin +1

Mary Fish  
[stampinpretty@gmail.com](mailto:stampinpretty@gmail.com)  
<http://stampinpretty.com>



Paper Trimmer -  
152392

Price: \$25.00



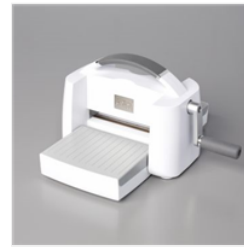
Basic White 8-1/2"  
X 11" Thick  
Cardstock -  
159229

Price: \$8.75



Stampin' Seal -  
152813

Price: \$8.00



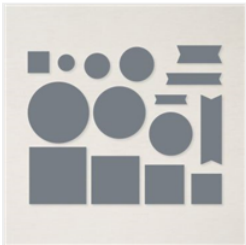
Stampin' Cut &  
Emboss Machine -  
149653

Price: \$125.00



Baker's Twine  
Essentials Pack -  
155475

Price: \$11.00



Stylish Shapes  
Dies - 159183

Price: \$30.00



VersaMark Pad -  
102283

Price: \$9.50



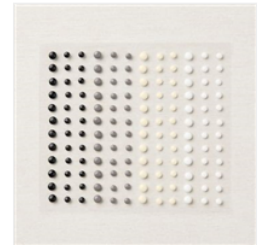
Basics Embossing  
Powders - 155554

Price: \$18.00



Heat Tool - 129053

Price: \$30.00



Classic Matte Dots  
- 158146

Price: \$7.00

Add All to Cart