

Congratulations with Design a Daydream DSP

Mary Fish
stampinpretty@gmail.com
<http://stampinpretty.com>



1. Begin with a 4 1/4 x 5 1/2 card base of Basic White Thick card stock.
2. Adhere a 4 x 5 1/4 piece of Basic White card stock to the card base with [Stampin' Dimensionals](#).
3. Use a Paper Trimmer to cut the following pieces of Design a Daydream Designer Series Paper:
 - 1 x 5
 - 1 1/2 x 4 1/2
 - 2 1/4 x 4
4. Adhere all as shown with [Multipurpose Liquid Glue](#) (it's more forgiving and allows you to get perfect placement before the glue dries).
5. Use a [Stampin' Cut & Emboss Machine](#) (Standard or Mini) to crop the following:
6. Basic White card stock with the 2 3/8 Layering Circle die
7. Vellum card stock with the 2 9/16 circle Stylish Shapes die
8. Blackberry Bliss card stock with the 2 5/8 butterfly Brilliant Wings die
9. Adhere together with [Multipurpose Liquid Glue](#) and to the card with [Stampin' Dimensionals](#).

Congratulations with Design a Daydream DSP

Mary Fish
stampinpretty@gmail.com
<http://stampinpretty.com>



10. Use a [Stamparatus](#) to stamp the sentiment (Charming Sentiments) in Versamark Ink onto a piece of Old Olive card stock. Cover with white Basics Embossing Powder. Set with a Heat Tool.
11. Crop with a [Stampin' Cut & Emboss Machine](#) (Standard or Mini) and the coordinating Sentiment Silhouettes Dies.
12. Adhere to the card with cut-to-size [Stampin' Dimensionals](#).
13. **POP OF PERSONALITY!** Embellish the butterfly with Polished Dots.
14. **PERFECT POLISH!** Use Multipurpose Liquid Glue to adhere a 2 1/4 x 5 3/4 piece of Design a Daydream Designer Series Paper to the outside flap of a Basic White Medium Envelope. You can see my video demonstration with tips on adding designer paper to an envelope flap [here](#).

Mary

 stampinpretty.com
Click for blog post

Click to shop! 

Congratulations with Design a Daydream DSP

Mary Fish
stampinpretty@gmail.com
<http://stampinpretty.com>



Charming
Sentiments Bundle
(English) - 158734

Price: \$52.00

Add to Cart



Charming
Sentiments
Photopolymer
Stamp Set
(English) - 159985

Price: \$23.00

Add to Cart



Sentiment
Silhouettes Dies -
158733

Price: \$35.00

Add to Cart



Basic White 8-1/2"
X 11" Thick
Cardstock -
159229

Price: \$8.75

Add to Cart



Basic White 8-1/2"
X 11" Cardstock -
159276

Price: \$10.25

Add to Cart



Stamparatus -
146276

Price: \$49.00

Add to Cart



Stampin' Seal -
152813

Price: \$8.00

Add to Cart



Stampin'
Dimensionals -
104430

Price: \$4.25

Add to Cart



Paper Snips
Scissors - 103579

Price: \$11.00

Add to Cart



Paper Trimmer -
152392

Price: \$25.00

Add to Cart



Multipurpose
Liquid Glue -
110755

Price: \$4.00

Add to Cart



Stylish Shapes
Dies - 159183

Price: \$30.00

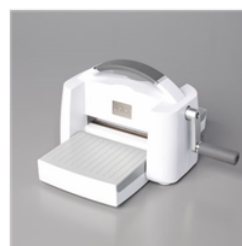
Add to Cart



Mini Stampin' Cut
& Emboss
Machine - 150673

Price: \$63.00

Add to Cart



Stampin' Cut &
Emboss Machine -
149653

Price: \$125.00

Add to Cart



VersaMark Pad -
102283

Price: \$9.50

Add to Cart

Congratulations with Design a Daydream DSP

Mary Fish
stampinpretty@gmail.com
<http://stampinpretty.com>



Basics Embossing
Powders - 155554

Price: \$18.00

Add to Cart



Heat Tool - 129053

Price: \$30.00

Add to Cart



Design A
Daydream 12" X
12" (30.5 X 30.5
Cm) Host Designer
Series Paper -
159161

Price: \$18.00

Add to Cart



Old Olive 8-1/2" X
11" Cardstock -
100702

Price: \$9.25

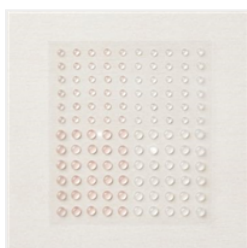
Add to Cart



Basic White
Medium Envelopes
- 159236

Price: \$7.50

Add to Cart



Polished Dots -
158134

Sale: \$5.25

Price: \$7.50

Add to Cart