

Sympathy Cards with Simply Elegant DSP

Mary Fish
stampinpretty@gmail.com
<http://stampinpretty.com>


stampin' pretty
a step-by-step tutorial



1. Begin with a 4 1/4 x 5 1/2 Very Vanilla Thick card base.
2. Layer and adhere a 3 3/4 x 5 piece of Very Vanilla card stock to a 4 x 5 1/4 piece of Basic Black card stock together and to the card base with [Stampin' Seal](#).
3. Adhere a 3 3/4 x 2 3/4 piece of Simply Elegant Designer Series Paper to the bottom portion of the card with [Stampin' Seal](#).
4. Adhere a 2 1/4 x 4 piece of Simply Elegant Designer Series Paper to a 2 1/2 x 4 1/4 piece of Very Vanilla card stock with [Stampin' Seal](#).

Sympathy Cards with Simply Elegant DSP

Mary Fish
stampinpretty@gmail.com
<http://stampinpretty.com>



5. Triple wrap with vanilla Baker's Twine Essentials, securing with a bow.
6. Adhere to the card with [Stampin' Dimensionals](#).
7. Use a [Stamparatus](#) to stamp the sentiment (Art Gallery Stamp Set) in Tuxedo Black Memento onto a piece of Very Vanilla card stock.
8. Crop with a [Stampin' Cut & Emboss](#) Machine and the coordinating Floral Gallery die.
9. Adhere with [Stampin' Dimensionals](#).
10. **POP OF PERSONALITY!** Embellish with three Matte Black Dots.

Sympathy Cards with Simply Elegant DSP

Mary Fish
stampinpretty@gmail.com
<http://stampinpretty.com>



1. Begin with a 4 1/4 x 5 1/2 card base of Very Vanilla Thick card stock.
2. Cut 2 1/2 inches from the bottom of the front of the card base (save for later).
3. Adhere a 3 3/4 x 2 3/4 piece of Simply Elegant Designer Series Paper to the remaining portion of the card front with [Stampin' Seal](#).
4. Layer and adhere a 5 x 3 3/4 piece of Very Vanilla card stock to a 5 1/4 x 4 piece of Basic Black card stock together and to the inside of the card with [Stampin' Seal](#).

Sympathy Cards with Simply Elegant DSP

Mary Fish
stampinpretty@gmail.com
<http://stampinpretty.com>



5. Adhere a 4 x 2 1/4 piece of Simply Elegant Designer Series Paper to the 4 1/4 x 2 1/2 piece of Very Vanilla card stock (cut from the card base) with [Stampin' Seal](#).
6. Triple wrap with vanilla Baker's Twine Essentials, securing with a bow.
7. Adhere to the card with [Stampin' Dimensionals](#).
8. Use a [Stamparatus](#) to stamp the sentiment (Art Gallery Stamp Set) in Tuxedo Black Memento onto a piece of Very Vanilla card stock.
9. Crop with a [Stampin' Cut & Emboss](#) Machine and the coordinating Floral Gallery die.
10. Adhere with [Stampin' Dimensionals](#).
11. **POP OF PERSONALITY!** Embellish with three Matte Black Dots.

Mary

[Click for blog post](#)

[Click to shop!](#)

Sympathy Cards with Simply Elegant DSP

Mary Fish
stampinpretty@gmail.com
<http://stampinpretty.com>



Art Gallery
Photopolymer
Stamp Set -
158201

Price: \$22.00

Add to Cart



Floral Gallery Dies
- 154316

Price: \$34.00

Add to Cart



Simply Elegant 12"
X 12" (30.5 X 30.5
Cm) Specialty
Designer Series
Paper - 155761

Price: \$15.00

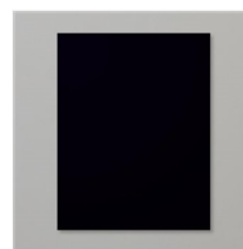
Add to Cart



Very Vanilla 8-1/2"
X 11" Thick
Cardstock -
144237

Price: \$8.25

Add to Cart



Basic Black 8-1/2"
X 11" Cardstock -
121045

Price: \$8.75

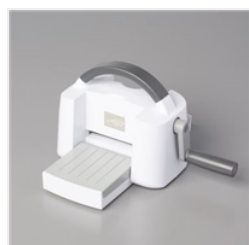
Add to Cart



Stampin' Cut &
Emboss Machine -
149653

Price: \$120.00

Add to Cart



Mini Stampin' Cut
& Emboss
Machine - 150673

Price: \$60.00

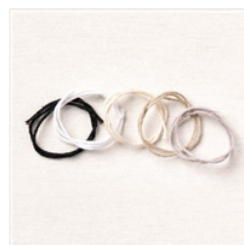
Add to Cart



Paper Trimmer -
152392

Price: \$25.00

Add to Cart



Baker's Twine
Essentials Pack -
155475

Price: \$11.00

Add to Cart



Stampin' Seal -
152813

Price: \$8.00

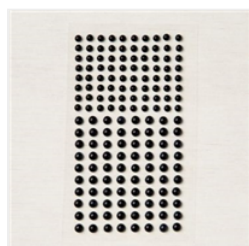
Add to Cart



Stampin'
Dimensionals -
104430

Price: \$4.00

Add to Cart



Matte Black Dots -
154284

Price: \$7.00

Add to Cart



Stamparatus -
146276

Price: \$49.00

Add to Cart



Tuxedo Black
Memento Ink Pad -
132708

Price: \$6.00

Add to Cart