

Flowering Fields Suite Collection & Sketch #38

Mary Fish
stampinpretty@gmail.com
<http://stampinpretty.com>



1. Begin with a 4 1/4 x 9 1/4 piece of Basic White Thick card stock.
2. **COOL TIP!** If you start with a full 8 1/2 x 11 piece of card stock, save the 1 3/4 x 4 1/4 piece you just cut off to create the card base. You will use it as the piece that holds the tulips!
3. Score and fold at 1 7/8 and 7 3/8.
4. Use a Paper Trimmer to cut the following pieces of Flowering Fields Designer Series Paper:
 - Grid Design: 4 x 5 1/4, 4 x 1 5/8 (qty 2), 4 x 1 1/2
 - Tulip Design: 3 3/4 x 1 3/8 (qty 2)
5. Layer and adhere a 3 3/4 x 5 piece of Basic White card stock to the 4 x 5 1/4 piece of Designer Series Paper together and to the inside of the card with Stampin' Seal.
6. Layer and adhere the tulip Designer Series Paper to the grid Designer Series Paper and then to the outside folds of the card with Stampin' Seal.
7. Adhere the final piece of grid Designer Series Paper to the 1 3/4 x 4 3/4 piece of Basic White card stock (the piece remaining from cutting the card base) with Stampin' Seal.
8. Adhere only to the top flap of the card front as shown with Stampin' Dimensionals.

Flowering Fields Suite Collection & Sketch #38

Mary Fish
stampinpretty@gmail.com
<http://stampinpretty.com>



9. Use a [Stampin' Cut & Emboss Machine](#) (Standard or Mini) along with the Tulips dies to crop the following pieces of card stock:
 - Mossy Meadow: 3 stems, 2 leaves
 - Real Red: 7 tulip petals ([see video here for assembly instructions](#))
10. Assemble and adhere as shown with Mini Glue Dots and Stampin' Dimensionals.
11. Triple wrap with white Baker's Twine Essentials, securing with a bow.
12. **POP OF PERSONALITY!** Embellish with Brushed Brass Butterflies.

Mary

[Click for blog post](#)

[Click to shop!](#)

Flowering Fields Suite Collection & Sketch #38

Mary Fish
stampinpretty@gmail.com
<http://stampinpretty.com>



Flowering Fields Suite Collection (English) - 157685

Price: \$126.75

Add to Cart



Flowering Tulips Bundle (English) - 157678

Price: \$52.00

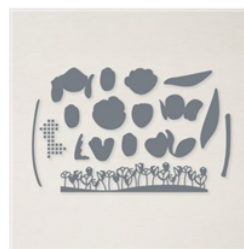
Add to Cart



Flowering Tulips Photopolymer Stamp Set (English) - 157672

Price: \$23.00

Add to Cart



Tulips Dies - 157677

Price: \$35.00

Add to Cart



Brushed Brass Butterflies - 158136

Price: \$10.00

Add to Cart



Flowering Fields 12" X 12" (30.5 X 30.5 Cm) Designer Series Paper - 157670

Price: \$11.50

Add to Cart



Basic White 8-1/2" X 11" Thick Cardstock - 159229

Price: \$8.25

Add to Cart



Real Red 8-1/2" X 11" Cardstock - 102482

Price: \$8.75

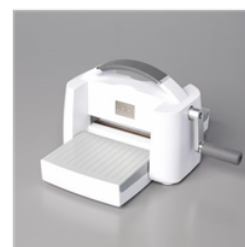
Add to Cart



Paper Trimmer - 152392

Price: \$25.00

Add to Cart



Stampin' Cut & Emboss Machine - 149653

Price: \$120.00

Add to Cart



Mini Stampin' Cut & Emboss Machine - 150673

Price: \$60.00

Add to Cart



Stampin' Seal - 152813

Price: \$8.00

Add to Cart



Stampin' Dimensionals - 104430

Price: \$4.00

Add to Cart



Stamparatus - 146276

Price: \$49.00

Add to Cart



Mossy Meadow Classic Stampin' Pad - 147111

Price: \$7.50

Add to Cart

Flowering Fields Suite Collection & Sketch #38

Mary Fish
stampinpretty@gmail.com
<http://stampinpretty.com>



Baker's Twine
Essentials Pack -
155475

Price: \$11.00

Add to Cart