

# A Sunset Scene with Grassy Grove by Stampin' Up!

Mary Fish  
[stampinpretty@gmail.com](mailto:stampinpretty@gmail.com)  
<http://stampinpretty.com>



1. Begin with a 5 1/2 x 4 1/4 card base of Basic Black card stock.
2. Use a [Stampin' Cut & Emboss Machine](#) along with the largest Stitched Rectangle Die to crop two pieces of Shimmery White card stock.
3. With Blending Brushes, apply the following Classic Inks (top to bottom): Crushed Curry, Pumpkin Pie, Cajun Craze to both pieces.
4. Use a Paper Trimmer to cut a Stitched Rectangle in half.
5. Use [Multipurpose Liquid Glue](#) to adhere each half to the card base 1/8" down from the edge.
6. Use a [Stampin' Cut & Emboss Machine](#) to crop a 5 1/4 x 3 3/4 piece of Basic Black card stock with the largest Grove die.
7. Adhere to the 2nd Stitched Rectangle die-cut with [Stampin' Dimensionals](#).
8. Adhere to the card with [Multipurpose Liquid Glue](#).

# A Sunset Scene with Grassy Grove by Stampin' Up!

Mary Fish  
[stampinpretty@gmail.com](mailto:stampinpretty@gmail.com)  
<http://stampinpretty.com>



9. Use a [Stamparatus](#) to stamp the sentiment in Versamark Ink onto a piece of Basic Black card stock.
10. Cover with White Basic Embossing Powder. Set with a Heat Tool.
11. Crop with a [Stampin' Cut & Emboss Machine](#) and the Messages Die.
12. Adhere a bow of White Baker's Twine (Essentials Pack) to the die-cut with a [Mini Glue Dot](#).
13. Adhere the card as shown with [Stampin' Dimensionals](#).
14. Crop the two deer (Basic Black card stock) using a [Stampin' Cut & Emboss Machine](#) and the Grove Dies.
15. Adhere as shown with [Multipurpose Liquid Glue](#).

Mary

[Click for blog post](#)

[Click to shop!](#)

# A Sunset Scene with Grassy Grove by Stampin' Up!

Mary Fish  
[stampinpretty@gmail.com](mailto:stampinpretty@gmail.com)  
<http://stampinpretty.com>



Grassy Grove  
Bundle (English) -  
157845

Price: \$56.50

Add to Cart



Grassy Grove  
Cling Stamp Set  
(English) - 157836

Price: \$24.00

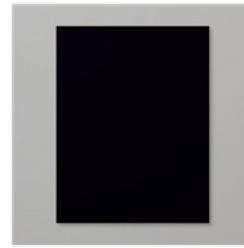
Add to Cart



Grove Dies -  
157844

Price: \$39.00

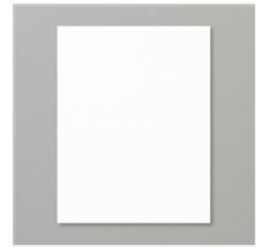
Add to Cart



Basic Black 8-1/2"  
X 11" Cardstock -  
121045

Price: \$8.75

Add to Cart



Shimmery White 8-  
1/2" X 11"  
Cardstock -  
101910

Price: \$10.00

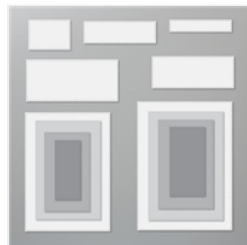
Add to Cart



Stampin' Cut &  
Emboss Machine -  
149653

Price: \$120.00

Add to Cart



Rectangle Stitched  
Dies - 151820

Price: \$35.00

Add to Cart



Messages Die -  
154422

Price: \$34.00

Add to Cart



Versamark Pad -  
102283

Price: \$9.50

Add to Cart



Basics Embossing  
Powders - 155554

Price: \$18.00

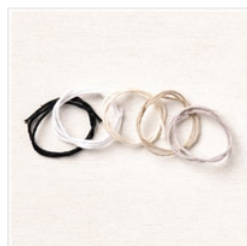
Add to Cart



Heat Tool - 129053

Price: \$30.00

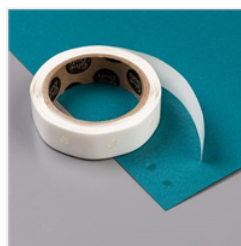
Add to Cart



Baker's Twine  
Essentials Pack -  
155475

Price: \$11.00

Add to Cart



Mini Glue Dots -  
103683

Price: \$5.25

Add to Cart



Multipurpose  
Liquid Glue -  
110755

Price: \$4.00

Add to Cart



Stampin'  
Dimensionals -  
104430

Price: \$4.00

Add to Cart

# A Sunset Scene with Grassy Grove by Stampin' Up!

Mary Fish  
[stampinpretty@gmail.com](mailto:stampinpretty@gmail.com)  
<http://stampinpretty.com>



Paper Trimmer -  
152392

Price: \$25.00

Add to Cart



Blending Brushes -  
153611

Price: \$12.00

Add to Cart



Crushed Curry  
Classic Stampin'  
Pad - 147087

Price: \$7.50

Add to Cart



Pumpkin Pie  
Classic Stampin'  
Pad - 147086

Price: \$7.50

Add to Cart



Cajun Craze  
Classic Stampin'  
Pad - 147085

Price: \$7.50

Add to Cart



Stamparatus -  
146276

Price: \$49.00

Add to Cart



Cajun Craze  
Classic Stampin'  
Ink Refill - 119790

Price: \$3.75

Add to Cart



Pumpkin Pie  
Classic Stampin'  
Ink Refill - 105229

Price: \$3.75

Add to Cart



Crushed Curry  
Classic Stampin'  
Ink Refill - 131158

Price: \$3.75

Add to Cart