

Ho Ho Ho with Perfectly Plaid by Stampin' Up!

Mary Fish
mary@stampinpretty.com
<http://stampinpretty.com>



1. Begin with a 4 1/8 x 5 1/2 card base of Basic White Thick card stock.
2. Use a [Stampin' Cut & Emboss Machine](#) to crop the following:
 - Basic White card stock - 3 3/4 x 5 1/8 and 2 3/8 x 1 Stitched Rectangle Dies
 - Pattern Party Designer Series Paper - 4 3/4 (diagonal length) Stitched Triangle Die
 - Real Red card stock - 2 7/8 scalloped Layering Circles Die
 - Basic Black card stock - 2 5/8 Layering Circles Die
3. Adhere the triangle die-cut to the largest rectangle die-cut with [Stampin' Seal](#).
4. Adhere to the card with [Stampin' Dimensionals](#).
5. Use a [Stamparatus](#) to position and stamp the sentiment (Perfectly Plaid Stamp Set) in Tuxedo Black Memento Ink onto the 2 3/8 x 1 Basic White Stitched Rectangle.
6. Adhere to the card with [Stampin' Dimensionals](#).
7. Adhere the circle die-cuts together as shown with [Stampin' Seal](#).
8. Wrap with white Baker's Twine Essentials, securing with a bow as shown.

Ho Ho Ho with Perfectly Plaid by Stampin' Up!

Mary Fish
mary@stampinpretty.com
<http://stampinpretty.com>



9. Adhere to the card with [Stampin' Dimensionals](#).
10. Use a [Stamparatus](#) to stamp the tree (Perfectly Plaid Stamp Set) in Tuxedo Black Memento Ink onto a piece of Basic White card stock.
11. Crop with the coordinating Pine Tree Punch.
12. Adhere with [Stampin' Dimensionals](#).
13. **POP OF PERSONALITY!** Embellish with Red Rhinestone Basic Jewels.

Mary

[Click for blog post](#)

[Click to shop!](#)

Ho Ho Ho with Perfectly Plaid by Stampin' Up!

Mary Fish
mary@stampinpretty.com
<http://stampinpretty.com>



Perfectly Plaid
Photopolymer
Stamp Set
(English) - 158335

Price: \$17.00

Add to Cart



Pine Tree Punch -
149521

Price: \$18.00

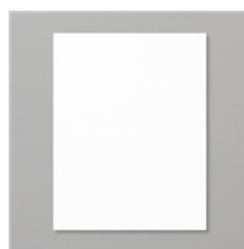
Add to Cart



Pattern Party 12" X
12" (30.5 X 30.5
Cm) Host Designer
Series Paper -
155426

Price: \$18.00

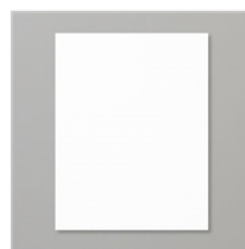
Add to Cart



Basic White 8-1/2"
X 11" Thick
Cardstock -
159229

Price: \$8.25

Add to Cart



Basic White 8-1/2"
X 11" Cardstock -
159276

Price: \$9.75

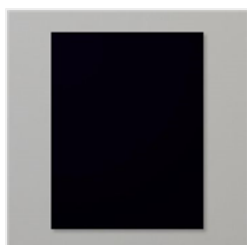
Add to Cart



Real Red 8-1/2" X
11" Cardstock -
102482

Price: \$8.75

Add to Cart



Basic Black 8-1/2"
X 11" Cardstock -
121045

Price: \$8.75

Add to Cart



Stampin' Cut &
Emboss Machine -
149653

Price: \$120.00

Add to Cart



Stitched Triangles
Dies - 152710

Price: \$35.00

Add to Cart



Rectangle Stitched
Dies - 151820

Price: \$35.00

Add to Cart



Stamparatus -
146276

Price: \$49.00

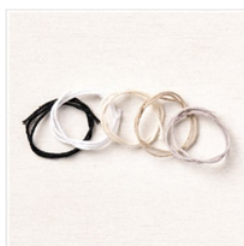
Add to Cart



Tuxedo Black
Memento Ink Pad -
132708

Price: \$6.00

Add to Cart



Baker's Twine
Essentials Pack -
155475

Price: \$11.00

Add to Cart



Paper Trimmer -
152392

Price: \$25.00

Add to Cart



Stampin' Seal -
152813

Price: \$8.00

Add to Cart

Ho Ho Ho with Perfectly Plaid by Stampin' Up!

Mary Fish

mary@stampinpretty.com

<http://stampinpretty.com>



Stampin'
Dimensionals -
104430

Price: \$4.00

Add to Cart