

Whimsical Trees Christmas Card

Mary Fish

mary@stampinpretty.com

<http://stampinpretty.com>



1. Begin with a 4 1/4 x 5 1/2 card base of Very Vanilla Thick card stock.
2. Layer and adhere a 3 7/8 x 5 1/8 piece of Merry Merlot card stock to a 4 x 5 1/4 piece of Basic Black card stock together and to the card with [Stampin' Seal](#).
3. Use a [Stamparatus](#) to position and stamp the Whimsical Tree Stamp in Versamark Ink onto a 3 3/4 x 5 piece of Very Vanilla card stock.
4. Cover with Black Basic's Stampin' Emboss Powder and set with a Heat Tool.
5. Adhere to the card with [Stampin' Seal](#).
6. Use a [Stamparatus](#) to stamp the sentiment in Versamark Ink onto a piece of Very Vanilla card stock.
7. Cover with Black Basic's Stampin' Emboss Powder and set with a Heat Tool.
8. Crop the sentiment as well as a piece of Basic Black card stock with the Double Oval Punch.
9. Adhere together with [Stampin' Seal](#) and to the card with [Stampin' Dimensionals](#).
10. Tie a bow of Black Baker's Twine Essentials. Adhere as shown with a [Mini Glue Dot](#).

Whimsical Trees Christmas Card

Mary Fish

mary@stampinpretty.com

<http://stampinpretty.com>



11. **POP OF PERSONALITY!** Embellish the tree with Matte Decorative Dots.
12. **PERFECT POLISH!** Crop a 5 3/4 x 2 1/2 piece of Merry Merlot Neutrals 6x6 Designer Series paper with a Stampin' Cut & Emboss Machine ([Standard](#)) and the curved Basic Borders Die. Use [Multipurpose Liquid Glue](#) to adhere to the outside flap of a Very Vanilla Medium Envelope. Trim the envelope flap to size with Paper Snips. You can see my video demonstration with tips on adding designer paper to an envelope flap [here](#).

Mary

[Click for blog post](#)

[Click to shop!](#)

Whimsical Trees Christmas Card

Mary Fish
mary@stampinpretty.com
<http://stampinpretty.com>



[Whimsical Trees Cling Stamp Set \(English\) - 156330](#)

Price: \$22.00

Add to Cart



[Double Oval Punch - 154242](#)

Price: \$18.00

Add to Cart



[Very Vanilla 8-1/2" X 11" Thick Cardstock - 144237](#)

Price: \$8.25

Add to Cart



[Very Vanilla 8-1/2" X 11" Cardstock - 101650](#)

Price: \$9.75

Add to Cart



[Basic Black 8-1/2" X 11" Cardstock - 121045](#)

Price: \$8.75

Add to Cart



[Merry Merlot 8-1/2" X 11" Cardstock - 146979](#)

Price: \$8.75

Add to Cart



[VersaMark Pad - 102283](#)

Price: \$9.50

Add to Cart



[Stamparatus - 146276](#)

Price: \$49.00

Add to Cart



[Basics Embossing Powders - 155554](#)

Price: \$18.00

Add to Cart



[Heat Tool - 129053](#)

Price: \$30.00

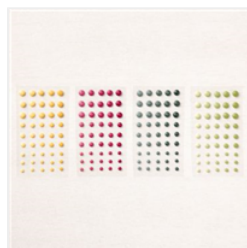
Add to Cart



[Baker's Twine Essentials Pack - 155475](#)

Price: \$11.00

Add to Cart



[Decorative Matte Dots - 156289](#)

Price: \$8.00

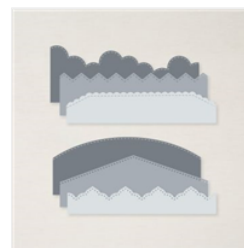
Add to Cart



[Stampin' Cut & Emboss Machine - 149653](#)

Price: \$120.00

Add to Cart



[Basic Borders Dies - 155558](#)

Price: \$29.00

Add to Cart



[Very Vanilla Medium Envelopes - 107300](#)

Price: \$7.50

Add to Cart

Whimsical Trees Christmas Card

Mary Fish

mary@stampinpretty.com

<http://stampinpretty.com>



[Multipurpose
Liquid Glue -
110755](#)

Price: \$4.00

[Add to Cart](#)



[Stampin' Seal -
152813](#)

Price: \$8.00

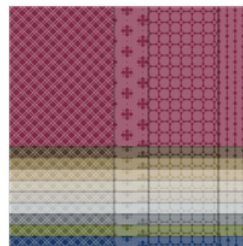
[Add to Cart](#)



[Stampin'
Dimensionals -
104430](#)

Price: \$4.00

[Add to Cart](#)



[Neutrals 6" X 6"
\(15.2 X 15.2 Cm\)
Designer Series
Paper - 155226](#)

Price: \$11.50

[Add to Cart](#)