

So Grateful Card with Gorgeous Leaves

Mary Fish

mary@stampinpretty.com

<http://stampinpretty.com>



1. Begin with a 5 1/2 x 4 1/4 Very Vanilla Thick card base.
2. Layer and adhere a 5 x 3 3/4 piece of Very Vanilla card stock to a 5 1/8 x 3 7/8 piece of Crushed Curry Cardstock with [Stampin' Seal](#).
3. Wrap with Black Baker's Twine Essentials, securing with a bow.
4. Adhere to the card with [Stampin' Dimensionals](#).
5. Use a Stampin' Cut & Emboss Machine ([Standard](#) or [Mini](#)) to crop the following:
 - Basic Black Cardstock - 1 3/8 Layering Circle Die (Qty 2), 3 1/4 x 1 1/4 Stitched Rectangle Die
 - Very Vanilla Cardstock - Intricate Leaves Dies (Qty 3), 3 15/16 x 15/16 Ornate Layers Die
 - Crushed Curry Cardstock - 1 3/8 Layering Circle Die
6. Adhere the intricate leaves die-cut to the circle die-cuts as shown with [Mini Glue Dots](#) that have been rolled between your fingers (makes them smaller, less visible).
7. Adhere to the card with [Stampin' Dimensionals](#).
8. Use a [Stamparatus](#) to position and stamp the sentiment in Tuexdo Black Memento Ink as

So Grateful Card with Gorgeous Leaves

Mary Fish

mary@stampinpretty.com

<http://stampinpretty.com>

shown.

9. Adhere to the Basic Black die-cut with [Multipurpose Liquid Glue](#) and do the card with [Stampin' Dimensionals](#).



POP OF PERSONALITY! Embellish with Matte Black Dots.

PERFECT POLISH! Crop a 5 3/4 x 2 1/2 piece of Crushed Curry Regals 6x6 Designer Series paper with a Stampin' Cut & Emboss Machine (Standard) and the V-Shaped Basic Borders Die. Use [Multipurpose Liquid Glue](#) to adhere to the outside flap of a Very Vanilla Medium Envelope. Trim the envelope flap to size with Paper Snips. You can see my video demonstration with tips on adding designer paper to an envelope flap [here](#).

Mary

[Click for blog post](#)

[Click to shop!](#)

So Grateful Card with Gorgeous Leaves

Mary Fish

mary@stampinpretty.com
<http://stampinpretty.com>



[Gorgeous Leaves Bundle - 158609](#)

Price: \$44.00

Add to Cart



[Gorgeous Leaves Cling Stamp Set - 153365](#)

Price: \$21.00

Add to Cart



[Ornate Thanks Photopolymer Stamp Set \(English\) - 158301](#)

Price: \$18.00

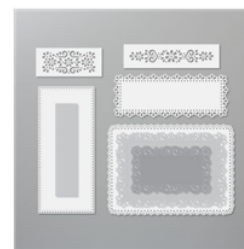
Add to Cart



[Intricate Leaves Dies - 153566](#)

Price: \$28.00

Add to Cart



[Ornate Layers Dies - 152726](#)

Price: \$37.00

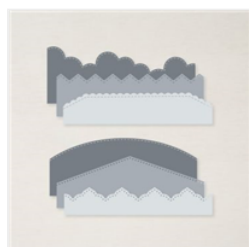
Add to Cart



[Rectangle Stitched Dies - 151820](#)

Price: \$35.00

Add to Cart



[Basic Borders Dies - 155558](#)

Price: \$29.00

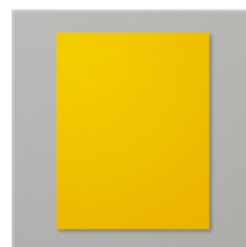
Add to Cart



[Very Vanilla 8-1/2" X 11" Thick Cardstock - 144237](#)

Price: \$8.25

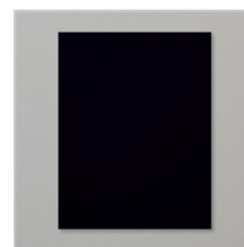
Add to Cart



[Crushed Curry 8-1/2" X 11" Cardstock - 131199](#)

Price: \$8.75

Add to Cart



[Basic Black 8-1/2" X 11" Cardstock - 121045](#)

Price: \$8.75

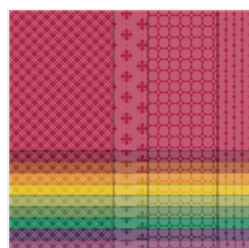
Add to Cart



[Very Vanilla Medium Envelopes - 107300](#)

Price: \$7.50

Add to Cart



[Regals 6" X 6" \(15.2 X 15.2 Cm\) Designer Series Paper - 155227](#)

Price: \$11.50

Add to Cart



[Stamparatus - 146276](#)

Price: \$49.00

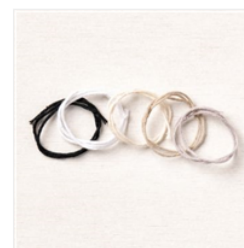
Add to Cart



[Tuxedo Black Memento Ink Pad - 132708](#)

Price: \$6.00

Add to Cart



[Baker's Twine Essentials Pack - 155475](#)

Price: \$11.00

Add to Cart

So Grateful Card with Gorgeous Leaves

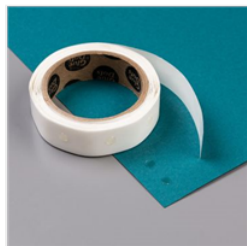
Mary Fish
mary@stampinpretty.com
<http://stampinpretty.com>



[Multipurpose
Liquid Glue -
110755](#)

Price: \$4.00

Add to Cart



[Mini Glue Dots -
103683](#)

Price: \$5.25

Add to Cart



[Stampin'
Dimensionals -
104430](#)

Price: \$4.00

Add to Cart



[Paper Trimmer -
152392](#)

Price: \$25.00

Add to Cart



[Simply Shammy -
147042](#)

Price: \$8.00

Add to Cart



[Stampin' Cut &
Emboss Machine -
149653](#)

Price: \$120.00

Add to Cart



[Mini Stampin' Cut
& Emboss
Machine - 150673](#)

Price: \$60.00

Add to Cart