

Making a CASE with Welcoming Woods

Mary Fish
mary@stampinpretty.com
<http://stampinpretty.com>



1. Begin with a 5 1/2 x 4 1/4 card base of Crumb Cake card stock.
2. Zip a 5 1/2 x 2 1/2 piece of Calypso Coral card stock through a Standard [Stampin' Cut & Emboss Machine](#) tucked inside the Bark 3D Embossing Folder.
3. Adhere to the card base with Stampin' Seal.
4. Use a [Stampin' Cut & Emboss Machine](#) to crop a piece of Crumb Cake card stock with the 4 3/4 x 3 3/8 Stitched Rectangle Die.
5. Adhere to the card with [Stampin' Dimensionals](#).
6. Use a [Stamparatus](#) to position and stamp the trees and horizon in Tuxedo Black Memento Ink onto a 4 3/8 x 3 piece of Basic White card stock.

Making a CASE with Welcoming Woods

Mary Fish
mary@stampinpretty.com
<http://stampinpretty.com>



1. Apply the following Classic Inks to the image with Blending Brushes (listed in order of top to bottom):
2. Night of Navy, Soft Succulent, Cinnamon Cider, Calypso Coral, Evening Evergreen
3. Double wrap with Crumb Cake Baker's Twine Essentials, securing with a bow.
4. Adhere to the card with [Stampin' Dimensionals](#).
5. Use a [Stamparatus](#) to position and stamp the sentiment in Tuxedo Black Memento Ink onto a 3 1/4 x 1/2 piece of Calypso Coral card stock.
6. Adhere as shown with [Stampin' Dimensionals](#).

Mary

[Click for blog post](#)

[Click to shop!](#)

Making a CASE with Welcoming Woods

Mary Fish

mary@stampinpretty.com

<http://stampinpretty.com>



[Welcoming Woods Photopolymer Stamp Set - 156550](#)

Price: \$21.00

[Add to Cart](#)



[Crumb Cake 8-1/2" X 11" Cardstock - 120953](#)

Price: \$8.75

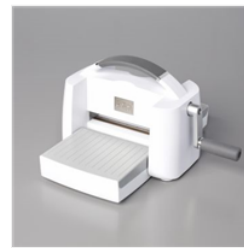
[Add to Cart](#)



[Calypso Coral 8-1/2" X 11" Cardstock - 122925](#)

Price: \$8.75

[Add to Cart](#)



[Stampin' Cut & Emboss Machine - 149653](#)

Price: \$120.00

[Add to Cart](#)



[Bark 3D Embossing Folder - 155431](#)

Price: \$10.00

[Add to Cart](#)



[Rectangle Stitched Dies - 151820](#)

Price: \$35.00

[Add to Cart](#)



[Basic White 8-1/2" X 11" Cardstock - 159276](#)

Price: \$9.75

[Add to Cart](#)



[Stamparatus - 146276](#)

Price: \$49.00

[Add to Cart](#)



[Tuxedo Black Memento Ink Pad - 132708](#)

Price: \$6.00

[Add to Cart](#)



[Blending Brushes - 153611](#)

Price: \$12.00

[Add to Cart](#)



[Night Of Navy Classic Stampin' Pad - 147110](#)

Price: \$7.50

[Add to Cart](#)



[Soft Succulent Classic Stampin' Pad - 155778](#)

Price: \$7.50

[Add to Cart](#)



[Cinnamon Cider Classic Stampin' Pad - 153114](#)

Price: \$7.50

[Add to Cart](#)



[Calypso Coral Classic Stampin' Pad - 147101](#)

Price: \$7.50

[Add to Cart](#)



[Evening Evergreen Classic Stampin' Pad - 155576](#)

Price: \$7.50

[Add to Cart](#)

Making a CASE with Welcoming Woods

Mary Fish
mary@stampinpretty.com
<http://stampinpretty.com>



[Baker's Twine Essentials Pack - 155475](#)

Price: \$11.00

[Add to Cart](#)



[Stampin' Seal - 152813](#)

Price: \$8.00

[Add to Cart](#)



[Stampin' Dimensionals - 104430](#)

Price: \$4.00

[Add to Cart](#)



[Paper Trimmer - 152392](#)

Price: \$25.00

[Add to Cart](#)