

# A Blackberry Beauty Gate-Fold Friend Card

Mary Fish  
[mary@stampinpretty.com](mailto:mary@stampinpretty.com)  
<http://stampinpretty.com>



1. Create a gate-fold card base using Blackberry Bliss card stock and the Stampin' Trimmer. Cut card stock to 5 1/2 x 8 1/2. Score at 2 1/8 and 6 3/8.
2. Layer and adhere a 1 5/8 x 5 piece of Blackberry Beauty Designer Series Paper to a 1 7/8 x 5 1/4 piece of Gold Foil with [Stampin' Seal](#). Repeat for the opposite side.
3. Adhere to the card base as shown with [Stampin' Seal](#).
4. Create a belly band with a 9 1/2 x 1 3/4 piece of Gold Foil.
5. Lay the card in the center and mark/score the belly band to wrap around the card. Leave a wee bit of room to allow it to slide on and off.
6. Use [Stampin' Seal+](#) (extra strength) to adhere the belly band ends together, placing it where it will be covered by the sentiment die-cut.
7. Use a Stampin' Cut & Emboss Machine ([Mini](#) or [Standard](#)) to crop a piece of Rich Razzleberry card stock using the 3 3/8 x 2 3/8 Seasonal Labels die along with the two ribbon slot dies.
8. Thread gold Simply Elegant Trim through the ribbon slots, two times, securing with a bow on the left-hand side.

# A Blackberry Beauty Gate-Fold Friend Card

Mary Fish  
[mary@stampinpretty.com](mailto:mary@stampinpretty.com)  
<http://stampinpretty.com>

9. Adhere the die-cut to the belly and with [Stampin' Dimensionals](#).



10. Use a Stampin' Cut & Emboss Machine ([Mini](#) or [Standard](#)) to crop a piece of Gold Foil using the 2 1/8 x 2 1/8 Seasonal Labels die.
11. Adhere with [Stampin' Dimensionals](#).
12. Adhere the floral die-cut from the Blackberry Beauty Ephemera Pack to the gold foil die-cut with [Mini Glue Dots](#).
13. Use a [Stamparatus](#) to stamp the sentiment in Rich Razzleberry Classic Ink onto a gold foiled die-cut label from the Blackberry Beauty Ephemera Pack.
14. Adhere to the card with [Stampin' Dimensionals](#).
15. **POP OF PERSONALITY!** Embellish with two gold Brushed Metallic Adhesive-Backed Dots.

Mary

[Click for blog post](#)

[Click to shop!](#)

# A Blackberry Beauty Gate-Fold Friend Card

Mary Fish  
[mary@stampinpretty.com](mailto:mary@stampinpretty.com)  
<http://stampinpretty.com>



[Beauty Of Tomorrow Cling Stamp Set \(English\) - 156459](#)

Price: \$22.00

[Add to Cart](#)



[Blackberry Beauty 12" X 12" \(30.5 X 30.5 Cm\) Specialty Designer Series Paper - 156458](#)

Price: \$15.00

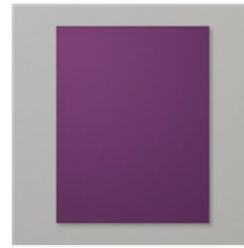
[Add to Cart](#)



[Blackberry Beauty Ephemera Pack - 156469](#)

Price: \$6.00

[Add to Cart](#)



[Blackberry Bliss 8-1/2" X 11" Cardstock - 133675](#)

Price: \$8.75

[Add to Cart](#)



[Rich Razzleberry 8-1/2" X 11" Cardstock - 115316](#)

Price: \$8.75

[Add to Cart](#)



[Gold Foil Sheets - 132622](#)

Price: \$5.00

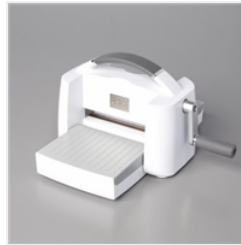
[Add to Cart](#)



[Mini Stampin' Cut & Emboss Machine - 150673](#)

Price: \$60.00

[Add to Cart](#)



[Stampin' Cut & Emboss Machine - 149653](#)

Price: \$120.00

[Add to Cart](#)



[Seasonal Labels Dies - 156299](#)

Price: \$38.00

[Add to Cart](#)



[Paper Trimmer - 152392](#)

Price: \$25.00

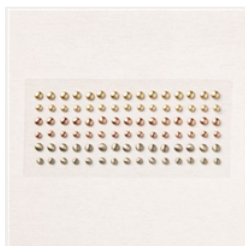
[Add to Cart](#)



[Simply Elegant Trim - 155766](#)

Price: \$7.50

[Add to Cart](#)



[Brushed Metallic Adhesive Backed Dots - 156506](#)

Price: \$9.00

[Add to Cart](#)



[Stampin' Dimensionals - 104430](#)

Price: \$4.00

[Add to Cart](#)



[Mini Glue Dots - 103683](#)

Price: \$5.25

[Add to Cart](#)



[Stamparatus - 146276](#)

Price: \$49.00

[Add to Cart](#)

# A Blackberry Beauty Gate-Fold Friend Card

Mary Fish

[mary@stampinpretty.com](mailto:mary@stampinpretty.com)

<http://stampinpretty.com>



[Rich Razzleberry  
Classic Stampin'  
Pad - 147091](#)

Price: \$7.50

Add to Cart