

# Stampin' Up! Daisy Garden - You're Amazing Card

Mary Fish  
[mary@stampinpretty.com](mailto:mary@stampinpretty.com)  
<http://stampinpretty.com>

  
stampin' pretty  
a step-by-step tutorial



1. Begin with a 4 1/4 x 5 1/2 card base of Basic White Thick card stock.
2. Use a [Stamparatus](#) to stamp the Daisy Garden image onto a 3 3/4 x 5 piece of Basic White card stock, being sure to offset it slightly to the right, leaving a tad more whitespace on the left.
3. Adhere to a 4 x 5 1/4 piece of Night of Navy card together and to the card base with [Stampin' Seal](#).
4. Use a Paper Trimmer to cut a piece of Vellum card stock to 3 x 2.
5. Adhere as shown with [Stampin' Dimensionals](#).
6. Use a [Stamparatus](#) to stamp the sentiments in Night of Navy Classic Ink onto a 1 1/8 x 1/2 (You're) and 4 x 1 1/2 (Amazing) pieces of Basic White card stock.
7. Adhere as shown with [Stampin' Dimensionals](#).

# Stampin' Up! Daisy Garden - You're Amazing Card

Mary Fish  
[mary@stampinpretty.com](mailto:mary@stampinpretty.com)  
<http://stampinpretty.com>



8. **POP OF PERSONALITY!** Embellish with a Pearl Basic Jewel that has been colored with a Dark Night of Navy Stampin' Blend.
9. **PERFECT POLISH!** Use Multipurpose Liquid Glue to adhere a 2 1/4 x 5 3/4 piece of Night of Navy 6x6 (Neutrals) Designer Series Paper to the outside flap of a Basic White Medium Envelope. Trim to size with Paper Snips. You can see my video demonstration with tips on adding designer paper to an envelope flap [here](#).

## Mary

[Click for blog post](#)

[Click to shop!](#)

# Stampin' Up! Daisy Garden - You're Amazing Card

Mary Fish  
[mary@stampinpretty.com](mailto:mary@stampinpretty.com)  
<http://stampinpretty.com>



[Daisy Garden Cling Stamp Set - 155079](#)

Price: \$22.00

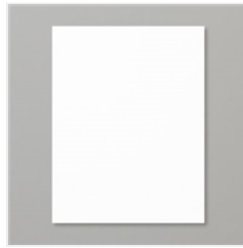
Add to Cart



[Create With Friends Photopolymer Stamp Set - 156058](#)

Price: \$17.00

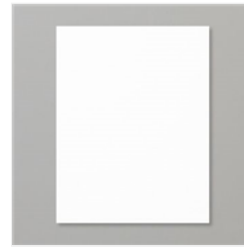
Add to Cart



[Basic White 8-1/2" X 11" Thick Cardstock - 159229](#)

Price: \$8.25

Add to Cart



[Basic White 8-1/2" X 11" Cardstock - 159276](#)

Price: \$9.75

Add to Cart



[Night Of Navy 8-1/2" X 11" Cardstock - 100867](#)

Price: \$8.75

Add to Cart



[Night Of Navy Classic Stampin' Pad - 147110](#)

Price: \$7.50

Add to Cart



[Stamparatus - 146276](#)

Price: \$49.00

Add to Cart



[Paper Trimmer - 152392](#)

Price: \$25.00

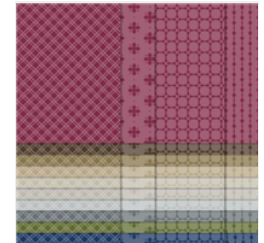
Add to Cart



[Vellum 8-1/2" X 11" Cardstock - 101856](#)

Price: \$10.00

Add to Cart



[Neutrals 6" X 6" \(15.2 X 15.2 Cm\) Designer Series Paper - 155226](#)

Price: \$11.50

Add to Cart



[Basic White Medium Envelopes - 159236](#)

Price: \$7.50

Add to Cart



[Pearl Basic Jewels - 144219](#)

Price: \$5.00

Add to Cart



[Night Of Navy Stampin' Blends Combo Pack - 154891](#)

Price: \$9.00

Add to Cart



[Stampin' Seal - 152813](#)

Price: \$8.00

Add to Cart



[Stampin' Dimensionals - 104430](#)

Price: \$4.00

Add to Cart

# Stampin' Up! Daisy Garden - You're Amazing Card

Mary Fish

[mary@stampinpretty.com](mailto:mary@stampinpretty.com)

<http://stampinpretty.com>



[Multipurpose  
Liquid Glue -  
110755](#)

Price: \$4.00

Add to Cart