

Painted Christmas Suite Kraft Gift Box

Mary Fish
mary@stampinpretty.com
<http://stampinpretty.com>


stampin' pretty
a step-by-step tutorial



1. Begin by assembling a Scalloped Kraft Treat Box.
2. Wrap with Cherry Cobbler & Gold 1/2" Metallic Ribbon, securing with a bow.
3. Use a [Stamparatus](#) to stamp the sentiment in Real Red Ink onto a piece of Basic White card stock.
4. Crop the sentiment with the coordinating Seasonal Labels Dies and a [Stampin' Cut & Emboss Machine](#).

Painted Christmas Suite Kraft Gift Box

Mary Fish
mary@stampinpretty.com
<http://stampinpretty.com>



5. Adhere Gold Holly Leaves to the top of the tag with Mini Glue Dots.
6. Thread a piece of Gold Simply Elegant Trim through the top of the tag and around the bow of ribbon, securing with a knot hidden below the center of the bow.

Mary

[Click for blog post](#)

[Click to shop!](#)

Painted Christmas Suite Kraft Gift Box

Mary Fish
mary@stampinpretty.com
<http://stampinpretty.com>



[Scalloped Kraft Treat Boxes - 155481](#)

Price: \$10.00

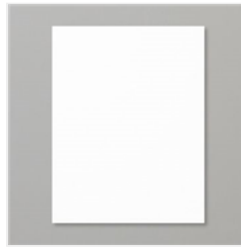
[Add to Cart](#)



[Simply Elegant Trim - 155766](#)

Price: \$7.50

[Add to Cart](#)



[Basic White 8-1/2" X 11" Cardstock - 159276](#)

Price: \$9.75

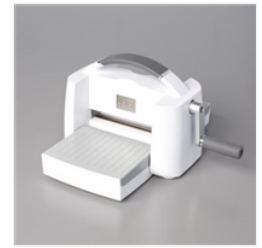
[Add to Cart](#)



[Paper Trimmer - 152392](#)

Price: \$25.00

[Add to Cart](#)



[Stampin' Cut & Emboss Machine - 149653](#)

Price: \$120.00

[Add to Cart](#)



[Mini Glue Dots - 103683](#)

Price: \$5.25

[Add to Cart](#)