

What's Cookin'? Stampin' Up!

Mary Fish
mary@stampinpretty.com
<http://stampinpretty.com>



1. Begin with a 4 1/4 x 5 1/2 card base of Sahara Sand card stock.
2. Adhere a 4 x 5 1/4 piece of Basic White card stock to the card base with [Stampin' Seal](#).
3. Adhere a 3 1/2 x 3 1/4 piece of Hand-Penned Designer Series Paper to a 3 3/4 x 3 1/2 piece of Sahara Sand card stock with [Stampin' Seal](#).
4. Adhere to the card with [Stampin' Dimensionals](#).
5. Adhere a 2 x 4 1/4 piece of Sahara Sand to the card as shown with [Stampin' Dimensionals](#) (top) and [Stampin' Seal](#) (bottom).
6. Use a [Stamparatus](#) to stamp the baking tools in Early Espresso Classic Ink onto Basic White card stock.
7. Crop the baking tools with a [Stampin' Cut & Emboss Machine](#) and the coordinating Cookin' dies.
8. Adhere as shown with [Stampin' Dimensionals](#).

What's Cookin'? Stampin' Up!

Mary Fish

mary@stampinpretty.com

<http://stampinpretty.com>



9. Use a Paper Trimmer to cut a piece of Basic White card stock to 3 x 3 3/4.
10. Use a [Stamparatus](#) to position and stamp the sentiment in Early Espresso Classic Ink as shown.
11. Flag the right side with the Banners Pick a Punch.
12. Tie a bow of Early Espresso 1/4" Faux Suede Trim on the left side as shown.
13. Adhere to the card with [Stampin' Dimensionals](#).
14. **POP OF PERSONALITY!** Embellish with circles from the Silver & Clear Epoxy Essentials.
15. **PERFECT POLISH!** Use Multipurpose Liquid Glue to adhere a 2 1/4 x 5 3/4 piece of Hand-Penned Designer Series Paper to the outside flap of a Basic White Medium Envelope. Trim to size with Paper Snips. You can see my video demonstration with tips on adding designer paper to an envelope flap [here](#).

Mary

[Click for blog post](#)

[Click to shop!](#)

What's Cookin'? Stampin' Up!

Mary Fish
mary@stampinpretty.com
<http://stampinpretty.com>



[What's Cookin' Bundle - 155845](#)

Price: \$45.75

Add to Cart



[What's Cookin' Cling Stamp Set - 154491](#)

Price: \$22.00

Add to Cart



[Cookin' Dies - 154333](#)

Price: \$29.00

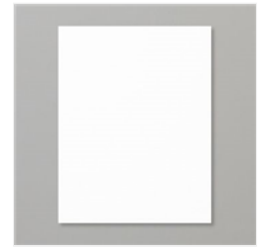
Add to Cart



[Sahara Sand 8-1/2 X 11" Cardstock - 121043](#)

Price: \$8.75

Add to Cart



[Basic White 8-1/2 X 11" Cardstock - 159276](#)

Price: \$9.75

Add to Cart



[Hand-Penned 12" X 12" \(30.5 X 30.5 Cm\) Designer Series Paper - 155499](#)

Price: \$11.50

Add to Cart



[Stamparatus - 146276](#)

Price: \$49.00

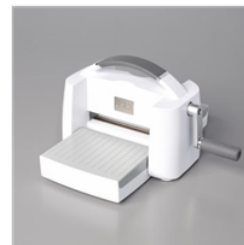
Add to Cart



[Early Espresso Classic Stampin' Pad - 147114](#)

Price: \$7.50

Add to Cart



[Stampin' Cut & Emboss Machine - 149653](#)

Price: \$120.00

Add to Cart



[Paper Trimmer - 152392](#)

Price: \$25.00

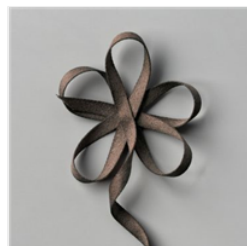
Add to Cart



[Banners Pick A Punch - 153608](#)

Price: \$23.00

Add to Cart



[Early Espresso 1/4" \(6.4 Mm\) Faux Suede Trim - 152472](#)

Price: \$6.50

Add to Cart



[Stampin' Seal - 152813](#)

Price: \$8.00

Add to Cart



[Stampin' Dimensionals - 104430](#)

Price: \$4.00

Add to Cart



[Paper Snips Scissors - 103579](#)

Price: \$10.00

Add to Cart

What's Cookin'? Stampin' Up!

Mary Fish
mary@stampinpretty.com
<http://stampinpretty.com>



[Basic White
Medium Envelopes
- 159236](#)

Price: \$7.50

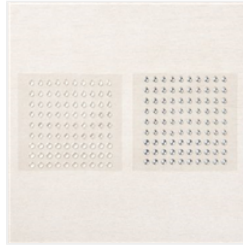
[Add to Cart](#)



[Multipurpose
Liquid Glue -
110755](#)

Price: \$4.00

[Add to Cart](#)



[Silver & Clear
Epoxy Essentials -
155567](#)

Price: \$9.50

[Add to Cart](#)