

A Hello Card with Retiring Open Range Dies

Mary Fish
mary@stampinpretty.com
<http://stampinpretty.com>



1. Begin with a 4 1/4 x 5 1/2 card base of Basic White Thick card stock.
2. Add Balmy Blue and Garden Green Classic Ink to a 4 x 5 1/4 piece of Basic White card stock with Blending Brushes as shown.
3. Adhere to the card with [Stampin' Seal](#).
4. Adhere a piece of Smoky Slate card stock to an Adhesive Sheet.
5. Crop with the windmill die and a [Mini Stampin' Cut & Emboss Machine](#).
6. Remove the adhesive backing and adhere to the card as shown.
7. Adhere a piece of Early Espresso card stock to a Foam Adhesive Sheet.
8. Crop with the fence die and a [Mini Stampin' Cut & Emboss Machine](#).
9. Remove the adhesive backing and adhere as shown.
10. Use a Stamparatus to stamp the "Hello" sentiment (Create with Friends Stamp Set) in Versamark Ink onto a piece of Early Espresso card stock.
11. Cover with white Basics Stampin' Emboss Powder, set with a Heat Tool.

A Hello Card with Retiring Open Range Dies

Mary Fish

mary@stampinpretty.com

<http://stampinpretty.com>



12. Crop with a [Mini Stampin' Cut & Emboss Machine](#) and the small dies from the retiring Always Die.
13. Adhere to the card as shown with [Mini Stampin' Dimensionals](#).
14. Use a [Stampin' Cut & Emboss Machine](#) to crop a 4 1/4x 5 1/2 piece of Basic White card stock with the large dome die from the Open Range Dies.
15. Zip the outside piece through a [Stampin' Cut & Emboss Machine](#) tucked inside the Bark 3D Embossing folder.
16. Adhere to the card base with [Stampin' Dimensionals](#).

Mary

[Click for blog post](#)

[Click to shop!](#)

A Hello Card with Retiring Open Range Dies

Mary Fish
mary@stampinpretty.com
<http://stampinpretty.com>



[Create With Friends Photopolymer Stamp Set - 156058](#)

Price: \$17.00

Add to Cart



[Open Range Dies - 154323](#)

Sale: \$14.50

Price: ~~\$29.00~~

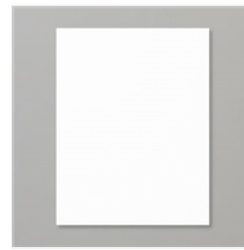
Add to Cart



[Always Dies - 154307](#)

Price: \$33.00

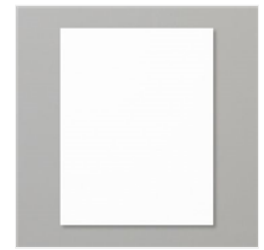
Add to Cart



[Basic White 8-1/2" X 11" Thick Cardstock - 159229](#)

Price: \$8.25

Add to Cart



[Basic White 8-1/2" X 11" Cardstock - 159276](#)

Price: \$9.75

Add to Cart



[Blending Brushes - 153611](#)

Price: \$12.00

Add to Cart



[Balmy Blue Classic Stampin' Pad - 147105](#)

Price: \$7.50

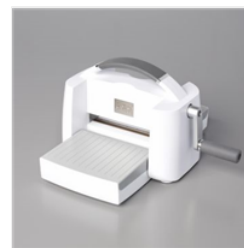
Add to Cart



[Garden Green Classic Stampin' Pad - 147089](#)

Price: \$7.50

Add to Cart



[Stampin' Cut & Emboss Machine - 149653](#)

Price: \$120.00

Add to Cart



[Smoky Slate 8-1/2" X 11" Cardstock - 131202](#)

Price: \$8.75

Add to Cart



[Early Espresso 8-1/2" X 11" Cardstock - 119686](#)

Price: \$8.75

Add to Cart



[Stamparatus - 146276](#)

Price: \$49.00

Add to Cart



[VersaMark Pad - 102283](#)

Price: \$9.50

Add to Cart



[Basics Embossing Powders - 155554](#)

Price: \$18.00

Add to Cart



[Heat Tool - 129053](#)

Price: \$30.00

Add to Cart

A Hello Card with Retiring Open Range Dies

Mary Fish
mary@stampinpretty.com
<http://stampinpretty.com>



[Adhesive Sheets - 152334](#)

Price: \$10.00

[Add to Cart](#)



[Foam Adhesive Sheets - 152815](#)

Price: \$8.00

[Add to Cart](#)



[Bark 3D Embossing Folder - 155431](#)

Price: \$10.00

[Add to Cart](#)



[Paper Trimmer - 152392](#)

Price: \$25.00

[Add to Cart](#)



[Stampin' Seal - 152813](#)

Price: \$8.00

[Add to Cart](#)



[Stampin' Dimensionals - 104430](#)

Price: \$4.00

[Add to Cart](#)