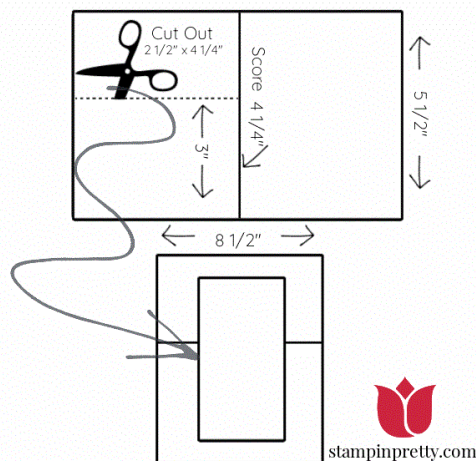


# Daisy Garden Dutch Door Fun Fold Card

Mary Fish  
[mary@stampinpretty.com](mailto:mary@stampinpretty.com)  
<http://stampinpretty.com>



1. Begin with a 5 1/2 x 4 1/4 card base of Basic White Thick card stock.
2. Use a Paper Trimmer to remove 2 1/2 x 4 1/4 from the left side of the scoreline as shown.



# Daisy Garden Dutch Door Fun Fold Card

Mary Fish

[mary@stampinpretty.com](mailto:mary@stampinpretty.com)

<http://stampinpretty.com>

3. Adhere a 4 x 2 3/4 piece of Pattern Party Designer Series Paper to the front of the card with [Stampin' Seal](#).
4. Layer and adhere a 3 3/4 x 5 piece of Basic White card stock to a 4 x 5 1/4 piece of Basic Black card stock together and to the inside of the card base with [Stampin' Seal](#).
5. Use a [Stamparatus](#) to stamp the Daisy Garden and sentiment (Through it Together) in Versamark Ink onto a 2 1/4 x 4 piece of Basic Black card stock.
6. Cover with white Basics Stampin' Emboss Powder, tap to remove excess. Set with a Heat Tool.
7. Adhere to the Basic White piece of card stock you removed from the card base with [Stampin' Seal](#).
8. Double wrap with black baker's twine (Baker's Twine Essentials Pack), securing with a bow.
9. Adhere the bottom half of the piece to the card base as shown with [Stampin' Dimensionals](#).



10. **POP OF PERSONALITY!** Embellish with Matte Black Dots as shown.
11. **PERFECT POLISH!** Use Multipurpose Liquid Glue to adhere a 2 1/4 x 5 3/4 piece of Pattern Party Designer Series Paper to the outside flap of a Basic White Medium Envelope. Trim to size with Paper Snips. You can see my video demonstration with tips on adding designer paper to an envelope flap [here](#).

Mary

[Click for blog post](#)

[Click to shop!](#)

# Daisy Garden Dutch Door Fun Fold Card

Mary Fish

[mary@stampinpretty.com](mailto:mary@stampinpretty.com)

<http://stampinpretty.com>



[Daisy Garden Cling Stamp Set - 155079](#)

Price: \$22.00

Add to Cart



[Through It Together Cling Stamp Set \(English\) - 155796](#)

Price: \$22.00

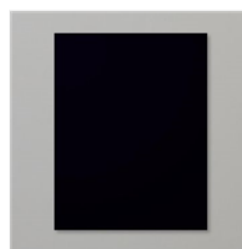
Add to Cart



[Basic White 8-1/2" X 11" Thick Cardstock - 159229](#)

Price: \$8.25

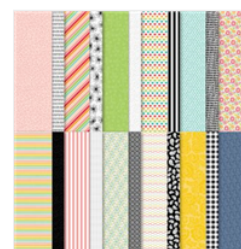
Add to Cart



[Basic Black 8-1/2" X 11" Cardstock - 121045](#)

Price: \$8.75

Add to Cart



[Pattern Party 12" X 12" \(30.5 X 30.5 Cm\) Host Designer Series Paper - 155426](#)

Price: \$18.00

Add to Cart



[Stamparatus - 146276](#)

Price: \$49.00

Add to Cart



[VersaMark Pad - 102283](#)

Price: \$9.50

Add to Cart



[Basics Embossing Powders - 155554](#)

Price: \$18.00

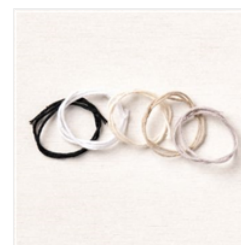
Add to Cart



[Heat Tool - 129053](#)

Price: \$30.00

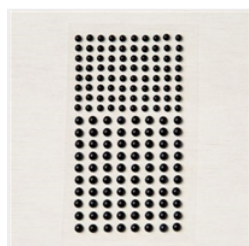
Add to Cart



[Baker's Twine Essentials Pack - 155475](#)

Price: \$11.00

Add to Cart



[Matte Black Dots - 154284](#)

Price: \$7.00

Add to Cart



[Paper Trimmer - 152392](#)

Price: \$25.00

Add to Cart



[Stampin' Seal - 152813](#)

Price: \$8.00

Add to Cart



[Multipurpose Liquid Glue - 110755](#)

Price: \$4.00

Add to Cart



[Stampin' Dimensionals - 104430](#)

Price: \$4.00

Add to Cart

# Daisy Garden Dutch Door Fun Fold Card

Mary Fish  
[mary@stampinpretty.com](mailto:mary@stampinpretty.com)  
<http://stampinpretty.com>



[Basic White  
Medium Envelopes  
- 159236](#)

Price: \$7.50

[Add to Cart](#)



[Paper Snips  
Scissors - 103579](#)

Price: \$10.00

[Add to Cart](#)