

Biggest Wish Happy Birthday Card & Tag

Mary Fish
mary@stampinpretty.com
<http://stampinpretty.com>


stampin' pretty
a step-by-step tutorial



1. Begin with a 5 1/2 x 4 1/4 card base of Basic White Thick card stock.
2. Use a Paper Trimmer to cut a piece of Pattern Party Designer Series Paper to 4 x 3 1/4.
3. Use a [Stampin' Cut & Emboss Machine](#) along with the Scalloped Contours die to crop the edge of the Designer Series Paper as shown.
4. Adhere with [Stampin' Dimensionals](#).
5. Wrap a piece of White 1/2" Faux Linen Ribbon around a 5 1/2 x 1 1/4 piece of Poppy Parade card stock, securing with a bow.
6. Adhere to the card with [Stampin' Seal](#) and [Stampin' Dimensionals](#).
7. Use a [Stamparatus](#) to stamp the large sentiment in Petal Pink Classic Ink onto Basic White card stock.
8. Position and stamp the small sentiment in Poppy Parade Classic Ink as shown.
9. Crop with a [Stampin' Cut & Emboss Machine](#) and the 3 11/16 x 1 11/16 Stitched Rectangle Die.
10. Adhere to the card with [Stampin' Seal](#) and [Stampin' Dimensionals](#).
11. **POP OF PERSONALITY!** Embellish with three Artistry Blooms Adhesive-Backed Sequins.

Biggest Wish Happy Birthday Card & Tag

Mary Fish

mary@stampinpretty.com

<http://stampinpretty.com>

12. **PERFECT POLISH!** Use Multipurpose Liquid Glue to adhere a 2 1/4 x 5 3/4 piece of Pattern Party Designer Series Paper to the outside flap of a Basic White Medium Envelope. Trim to size with Paper Snips.



1. Use a [Stamparatus](#) to stamp the large sentiment in Petal Pink Classic Ink, then position and stamp the small sentiment in Poppy Parade Classic Ink onto a Basic White card stock piece.
2. Crop with a [Stampin' Cut & Emboss Machine](#) and 1 13/16 x 3 14/16 Tailored Made Tags die.
3. Use the same die to crop a piece of Pattern Party Designer Series Paper.
4. Tie together with white Baker's Twine.
5. **POP OF PERSONALITY!** Embellish with three Artistry Blooms Adhesive-Backed Sequins.

Mary

[Click for blog post](#)

[Click to shop!](#)

Biggest Wish Happy Birthday Card & Tag

Mary Fish
mary@stampinpretty.com
<http://stampinpretty.com>



[Biggest Wish Photopolymer Stamp Set \(English\) - 155052](#)

Price: \$17.00

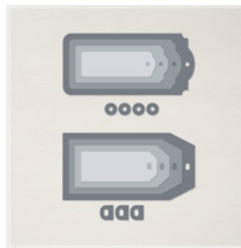
[Add to Cart](#)



[Pattern Party 12" X 12" \(30.5 X 30.5 Cm\) Host Designer Series Paper - 155426](#)

Price: \$18.00

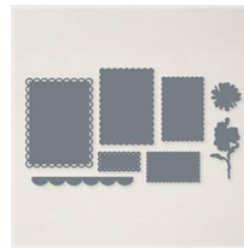
[Add to Cart](#)



[Tailor Made Tags Dies - 155563](#)

Price: \$22.00

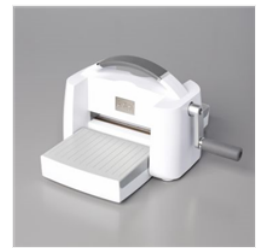
[Add to Cart](#)



[Scalloped Contours Dies - 155560](#)

Price: \$35.00

[Add to Cart](#)



[Stampin' Cut & Emboss Machine - 149653](#)

Price: \$120.00

[Add to Cart](#)



[Paper Trimmer - 152392](#)

Price: \$25.00

[Add to Cart](#)



[Stampin' Seal - 152813](#)

Price: \$8.00

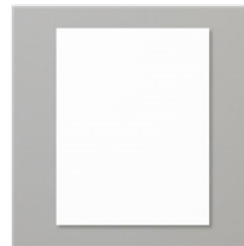
[Add to Cart](#)



[Basic White 8-1/2" X 11" Cardstock - 159276](#)

Price: \$9.75

[Add to Cart](#)



[Basic White 8-1/2" X 11" Thick Cardstock - 159229](#)

Price: \$8.25

[Add to Cart](#)



[Basic White Medium Envelopes - 159236](#)

Price: \$7.50

[Add to Cart](#)



[Multipurpose Liquid Glue - 110755](#)

Price: \$4.00

[Add to Cart](#)



[Stampin' Dimensionals - 104430](#)

Price: \$4.00

[Add to Cart](#)



[Stamparatus - 146276](#)

Price: \$49.00

[Add to Cart](#)



[Paper Snips Scissors - 103579](#)

Price: \$10.00

[Add to Cart](#)



[Artistry Blooms Adhesive-Backed Sequins - 152477](#)

Price: \$7.00

[Add to Cart](#)

Biggest Wish Happy Birthday Card & Tag

Mary Fish

mary@stampinpretty.com

<http://stampinpretty.com>



[Baker's Twine Essentials Pack - 155475](#)

Price: \$11.00

Add to Cart



[Petal Pink Classic Stampin' Pad - 147108](#)

Price: \$7.50

Add to Cart



[Poppy Parade Classic Stampin' Pad - 147050](#)

Price: \$7.50

Add to Cart



[Flowers For Every Season Ribbon Combo Pack - 153620](#)

Price: \$10.00

Add to Cart