

A Simply Succulents Thank You Card

Mary Fish
mary@stampinpretty.com
<http://stampinpretty.com>


stampin' pretty
a step-by-step tutorial



1. Begin with a 4 1/4 x 5 1/2 card base of Basic Gray card stock.
2. Use a [Stampin' Cut & Emboss Machine](#) to crop a piece of Petal Pink card stock with the 2 5/8 x 4 Stitched Rectangle Die and a piece of Basic White card stock with the 3 3/8 x 4 3/4 Stitched Rectangle Die.
3. Zip the cropped piece of Basic White card stock through a [Stampin' Cut & Emboss Machine](#) tucked inside the Subtle 3D Embossing Folder.
4. Cut the cropped piece of Petal Pink card stock in half on the 2 5/8 end.
5. Adhere each piece of Petal Pink to the backside of the Basic White as shown with [Stampin' Seal](#).
6. Adhere to the card base with [Stampin' Dimensionals](#).
7. Use a [Stamparatus](#) to stamp the images in Versamark Ink onto a piece of Basic Gray card stock. Cover with White Stampin' Emboss Powder, tap to remove excess, and set with a Heat Tool.
8. Use a [Stamparatus](#) to stamp the sentiment in Versamark Ink onto a piece of Petal Pink card stock. Cover with White Stampin' Emboss Powder, tap to remove excess, and set with a

A Simply Succulents Thank You Card

Mary Fish
mary@stampinpretty.com
<http://stampinpretty.com>

Heat Tool.

9. Crop all with the coordinating Potted Succulents dies and a [Stampin' Cut & Emboss Machine](#)



10. Adhere a bow of White Baker's Twine as shown with a Mini Glue Dot as shown.
11. Adhere to the card with [Stampin' Seal](#) and [Stampin' Dimensionals](#).
12. **POP OF PERSONALITY!** Embellish with Petal Pink Elegant Faceted Gems.
13. **PERFECT POLISH!** Use Multipurpose Liquid Glue to adhere a 2 1/4 x 5 3/4 piece of Basic Gray Neutrals 6x6 Designer Series Paper to the outside flap of a Basic White Medium Envelope. Trim the edges with Paper Snips (if desired). You can see my video demonstration with tips on adding designer paper to an envelope flap [here](#).

Mary

[Click for blog post](#)

[Click to shop!](#)

A Simply Succulents Thank You Card

Mary Fish

mary@stampinpretty.com

<http://stampinpretty.com>



[Simply Succulents Bundle - 156264](#)

Price: \$54.75

Add to Cart



[Simply Succulents Cling Stamp Set - 154480](#)

Price: \$22.00

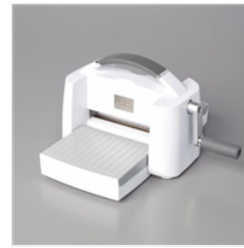
Add to Cart



[Potted Succulents Dies - 154330](#)

Price: \$39.00

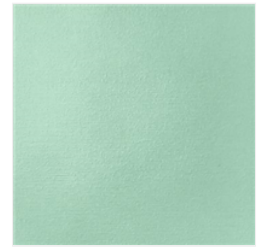
Add to Cart



[Stampin' Cut & Emboss Machine - 149653](#)

Price: \$120.00

Add to Cart



[Subtle 3D Embossing Folder - 151775](#)

Price: \$10.00

Add to Cart



[Rectangle Stitched Dies - 151820](#)

Price: \$35.00

Add to Cart



[Basic Gray 8-1/2" X 11" Cardstock - 121044](#)

Price: \$8.75

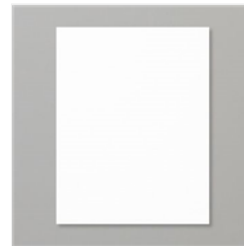
Add to Cart



[Petal Pink 8-1/2" X 11" Cardstock - 146985](#)

Price: \$8.75

Add to Cart



[Basic White 8-1/2" X 11" Cardstock - 159276](#)

Price: \$9.75

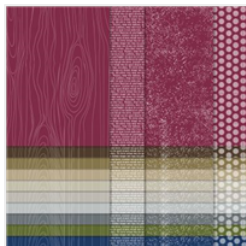
Add to Cart



[Basic White Medium Envelopes - 159236](#)

Price: \$7.50

Add to Cart



[Neutrals 6" X 6" \(15.2 X 15.2 Cm\) Designer Series Paper - 152485](#)

Price: \$11.50

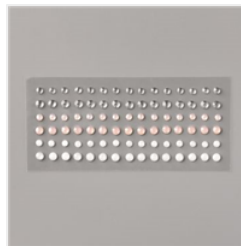
Add to Cart



[Snail Mail Twine Combo Pack - 154579](#)

Price: \$7.00

Add to Cart



[Elegant Faceted Gems - 152464](#)

Price: \$7.50

Add to Cart



[Versamark Pad - 102283](#)

Price: \$9.50

Add to Cart



[Stamparatus - 146276](#)

Price: \$49.00

Add to Cart

A Simply Succulents Thank You Card

Mary Fish
mary@stampinpretty.com
<http://stampinpretty.com>



[White Stampin' Emboss Powder - 109132](#)

Price: \$6.00

[Add to Cart](#)



[Heat Tool - 129053](#)

Price: \$30.00

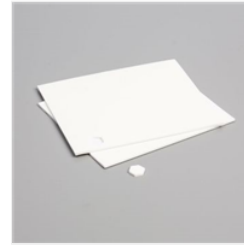
[Add to Cart](#)



[Stampin' Seal - 152813](#)

Price: \$8.00

[Add to Cart](#)



[Stampin' Dimensionals - 104430](#)

Price: \$4.00

[Add to Cart](#)



[Multipurpose Liquid Glue - 110755](#)

Price: \$4.00

[Add to Cart](#)