

A Positive and A Negative - Stampin' Up! In The Pines

Mary Fish
mary@stampinpretty.com
<http://stampinpretty.com>



Today's creations showcase a Note Card Duo that uses both the positive (card on left) and the negative (card on right) space created by using two dies (Pine Woods Dies) and one piece of Whisper White Thick card stock.

A Positive and A Negative - Stampin' Up! In The Pines

Mary Fish
mary@stampinpretty.com
<http://stampinpretty.com>



1. Begin by burnishing the fold on a Whisper White Note Card with a Bone Folder.
2. Adhere a 2 3/8 x 4 piece of Plaid Tidings 6x6 Designer Series Paper to the note card with [Stampin' Dimensionals](#).
3. Use a [Stampin' Cut & Emboss Machine](#) to crop the solid tree (Pine Woods Dies) from the center of a 3 1/4 x 4 3/4 piece of Whisper White Thick card stock. (Keep BOTH pieces.)
4. Adhere the tree die-cut to a [Foam Adhesive Sheet](#), then crop again with the detailed die that fits perfectly inside.
5. Remove all the middle pieces with a Take You Pick tool, then remove the protective backing and adhere to the card as shown.
6. Tie a bow of Gold 1/16" Cord (Wonder of the Season Ribbon Combo Pack). Adhere it as shown with a [Mini Glue Dot](#).

A Positive and A Negative - Stampin' Up! In The Pines

Mary Fish
mary@stampinpretty.com
<http://stampinpretty.com>



7. Use a [Stamparatus](#) to position and stamp the sentiment in Versamark Ink onto a 1/2 x 3 piece of Whisper White card stock.
8. Cover with Gold Stampin' Emboss Powder, tap to remove any excess, then set with a Heat Tool.
9. Flag the ends with the Banners Pick a Punch.
10. Adhere to the card with [Stampin' Seal](#).
11. **POP OF PERSONALITY!** Add three Gold Metallic Pearls.
12. **THE FINISHING TOUCH!** Use the [Stampin' Cut & Emboss Machine](#) along with the scalloped edge Envelopes Die, to crop a 4 3/4 x x 4 7/8 piece of Plaid Tidings 6x6 Designer Series Paper.
13. Adhere to the inside of Whisper White Note Card Envelope with [Multipurpose Liquid Glue](#).

A Positive and A Negative - Stampin' Up! In The Pines

Mary Fish
mary@stampinpretty.com
<http://stampinpretty.com>



1. Begin by burnishing the fold on a Whisper White Note Card with a Bone Folder.
2. Adhere a 2 3/8 x 4 piece of Plaid Tidings 6x6 Designer Series Paper to the note card with [Stampin' Seal](#).
3. Adhere the 3 1/4 x 4 3/4 piece of Whisper White Thick card stock that has been cropped with the tree die the card with [Stampin' Dimensionals](#).
4. Tie a bow of Gold 1/16" Cord (Wonder of the Season Ribbon Combo Pack). Adhere it as shown with a [Mini Glue Dot](#).

A Positive and A Negative - Stampin' Up! In The Pines

Mary Fish
mary@stampinpretty.com
<http://stampinpretty.com>



5. Use a [Stamparatus](#) to position and stamp the sentiment in Versamark Ink onto a 1/2 x 3 piece of Whisper White card stock.
6. Cover with Gold Stampin' Emboss Powder, tap to remove any excess, then set with a Heat Tool.
7. Flag the ends with the Banners Pick a Punch.
8. Adhere to the card with [Stampin' Seal](#).
9. **THE FINISHING TOUCH!** Use the [Stampin' Cut & Emboss Machine](#) along with the scalloped edge Envelopes Die, to crop a 2 1/8 x 5 1/2 piece of Plaid Tidings 6x6 Designer Series Paper.
10. Adhere to the flap of Whisper White Note Card Envelope with [Multipurpose Liquid Glue](#).

Mary

[Click for blog post](#)

[Click to shop!](#)

A Positive and A Negative - Stampin' Up! In The Pines

Mary Fish

mary@stampinpretty.com

<http://stampinpretty.com>



[In The Pines Bundle - 155182](#)

Price: \$51.25

Add to Cart



[In The Pines Photopolymer Stamp Set - 153448](#)

Price: \$21.00

Add to Cart



[Pine Woods Dies - 153563](#)

Price: \$36.00

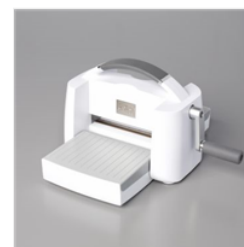
Add to Cart



[Whisper White Note Cards & Envelopes - 131527](#)

Price: \$7.00

Add to Cart



[Stampin' Cut & Emboss Machine - 149653](#)

Price: \$120.00

Add to Cart



[Plaid Tidings 6" X 6" \(15.2 X 15.2 Cm\) Designer Series Paper - 153527](#)

Price: \$11.50

Add to Cart



[Paper Trimmer - 152392](#)

Sale: \$22.50

Price: ~~\$25.00~~

Add to Cart



[Banners Pick A Punch - 153608](#)

Price: \$23.00

Add to Cart



[Stamparatus - 146276](#)

Sale: \$44.10

Price: ~~\$49.00~~

Add to Cart



[Versamark Pad - 102283](#)

Price: \$9.50

Add to Cart



[Gold Stampin' Emboss Powder - 109129](#)

Sale: \$5.40

Price: ~~\$6.00~~

Add to Cart



[Heat Tool - 129053](#)

Sale: \$27.00

Price: ~~\$30.00~~

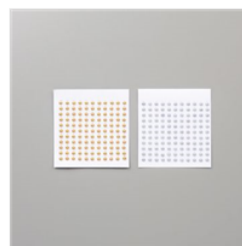
Add to Cart



[Wonder Of The Season Ribbon Combo Pack - 153537](#)

Price: \$9.00

Add to Cart



[Metallic Pearls - 146282](#)

Sale: \$6.30

Price: ~~\$7.00~~

Add to Cart



[Stampin' Dimensionals - 104430](#)

Sale: \$3.60

Price: ~~\$4.00~~

Add to Cart

A Positive and A Negative - Stampin' Up! In The Pines

Mary Fish

mary@stampinpretty.com

<http://stampinpretty.com>



[Glue Dots -
103683](#)

Price: \$5.25

Add to Cart



[Foam Adhesive
Sheets - 152815](#)

Sale: \$7.20

Price: ~~\$8.00~~

Add to Cart



[Envelopes Dies -
153531](#)

Price: \$36.00

Add to Cart