

Brushed Metallic Beautiful Autumn Card

Mary Fish
mary@stampinpretty.com
<http://stampinpretty.com>



1. Begin with a 4 1/4 x 5 1/2 card base of Very Vanilla Thick card stock.
2. Layer and adhere a 1 1/2 x 5 1/2 piece of Gilded Autumn Specialty Designer Series Paper to a 1/2 x 5 1/2 piece of Bronze Brushed Metallic card stock together and to the card as shown with [Stampin' Seal](#).
3. Use a [Stampin' Cut & Emboss Machine](#), along with a Magnetic Cutting Plate to crop the three leaves using the Stitched Leaves Dies of Bronze Brushed Metallic card stock.
4. Use a Stamparatus to position and stamp the sentiment (Beautiful Autumn) in Soft Suede and then again in Versamark.
5. Cover with Clear Stampin' Emboss Powder. Tap to remove the excess. Set with a Heat Tool.
6. Crop as shown using the largest Stitched So Sweetly die.
7. Adhere the largest leaf to the back of the sentiment die-cut with Mini Glue Dots. Adhere to the card with Stampin' Dimensionals.
8. Adhere the two smaller leaves together and to the card with Mini Glue Dots.

Brushed Metallic Beautiful Autumn Card

Mary Fish

mary@stampinpretty.com

<http://stampinpretty.com>



9. **POP OF PERSONALITY!** String two Acorn Trinkets onto a piece of Linen Thread, securing with a bow. Adhere with Mini Glue Dots.
10. **STAMPIN' UP! ENVELOPE DIES AVAILABLE NOW!** Use the [Stampin' Cut & Emboss Machine](#) along with the scalloped edge Envelope Die, to crop a 5 1/4 x 6 piece of Gilded Autumn Specialty Designer Series Paper. You can see my tutorial on using the Envelope Dies on my blog page [here](#).
11. Adhere to the inside of the envelope with [Multipurpose Liquid Glue](#).

Mary

Click for blog post 

Click to shop! 

Brushed Metallic Beautiful Autumn Card

Mary Fish

mary@stampinpretty.com

<http://stampinpretty.com>



[Gilded Autumn Suite Collection \(English\) - 155123](#)

Price: \$96.25

[Add to Cart](#)



[Beautiful Autumn Photopolymer Stamp Set \(English\) - 153450](#)

Price: \$17.00

[Add to Cart](#)



[Gilded Autumn Specialty Designer Series Paper - 153520](#)

Price: \$15.00

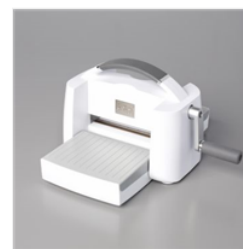
[Add to Cart](#)



[Brushed Metallic Cardstock - 153524](#)

Price: \$15.00

[Add to Cart](#)



[Stampin' Cut & Emboss Machine - 149653](#)

Price: \$120.00

[Add to Cart](#)



[Magnetic Cutting Plate - 149656](#)

Price: \$24.00

[Add to Cart](#)



[Stitched Leaves Dies - 153567](#)

Price: \$35.00

[Add to Cart](#)



[Stamparatus - 146276](#)

Price: \$49.00

[Add to Cart](#)



[Soft Suede Classic Stampin' Pad - 147115](#)

Price: \$7.50

[Add to Cart](#)



[VersaMark Pad - 102283](#)

Price: \$9.50

[Add to Cart](#)



[Clear Stampin' Emboss Powder - 109130](#)

Price: \$6.00

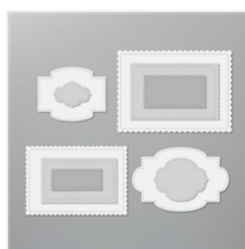
[Add to Cart](#)



[Heat Tool - 129053](#)

Price: \$30.00

[Add to Cart](#)



[Stitched So Sweetly Dies - 151690](#)

Price: \$32.00

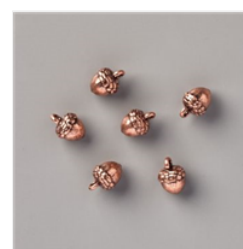
[Add to Cart](#)



[Linen Thread - 104199](#)

Price: \$5.00

[Add to Cart](#)



[Acorn Trinkets - 153552](#)

Price: \$8.00

[Add to Cart](#)

Brushed Metallic Beautiful Autumn Card

Mary Fish

mary@stampinpretty.com

<http://stampinpretty.com>



[Glue Dots -
103683](#)

Price: \$5.25

Add to Cart



[Stampin' Seal -
152813](#)

Price: \$8.00

Add to Cart



[Very Vanilla
Medium Envelopes
- 107300](#)

Price: \$7.50

Add to Cart



[Envelopes Dies -
153531](#)

Price: \$36.00

Add to Cart



[Paper Trimmer -
152392](#)

Price: \$25.00

Add to Cart