

Happy Halloween Card

Stampin' Up! Magic In This Night!

Mary Fish
mary@stampinpretty.com
<http://stampinpretty.com>



1. Begin with a 4 1/4 x 5 1/2 card base of Basic Black card stock.
2. Zip a 4 x 5 1/4 piece of Smoky Slate card stock through a [Stampin' Cut & Emboss Machine](#) tucked inside the Cobwebs 3D Embossing Folder.
3. Adhere to a 4 1/8 x 5 3/8 piece of Whisper White card stock with [Stampin' Seal](#).
4. Adhere to the card base with Stampin' Dimensionals.
5. Use a Stampin' Up! Paper Trimmer to cut a 2 1/4 x 5 1/4 piece of Magic in this Night Designer Series Paper.
6. Adhere as shown with [Stampin' Seal](#).
7. Zip a 3 1/2 x 4 piece of Basic Black card stock through a [Stampin' Cut & Emboss Machine](#) tucked inside the Cobwebs 3D Embossing Folder.
8. Adhere to the card with Stampin' Dimensionals.
9. Crop a piece of Magic In this Night Designer Series Paper with the largest Halloween Magic Die.
10. Adhere with Stampin' Dimensionals.

Happy Halloween Card

Stampin' Up! Magic In This Night!

Mary Fish
mary@stampinpretty.com
<http://stampinpretty.com>



11. Use a [Stamparatus](#) to position and stamp the label and sentiment (Hallows Night Magic Stamp Set) in Tuxedo Black Memento Ink onto Whisper White card stock.
12. Crop with the coordinating Halloween Magic Die and a [Stampin' Cut & Emboss Machine](#).
13. Color the flowers and leaves with the following Light & Dark Stampin' Blends: Blackberry Bliss & Smoky Slate.
14. Adhere a 4" piece of 1-1/2" Metallic Mesh Ribbon to the back of the sentiment die-cut with [Stampin' Seal +](#).
15. Adhere to the card with Stampin' Dimensionals.
16. **POP OF PERSONALITY!** Add five Iridescent Pearls as shown.

Mary

[Click for blog post](#)

[Click to shop!](#)

Happy Halloween Card

Stampin' Up! Magic In This Night!

Mary Fish
mary@stampinpretty.com
<http://stampinpretty.com>



[Magic In This Night Suite Collection - 155122](#)

Price: \$88.75

[Add to Cart](#)



[Hallows Night Magic Bundle - 155188](#)

Price: \$46.75

[Add to Cart](#)



[Hallows Night Magic Cling Stamp Set - 153356](#)

Price: \$21.00

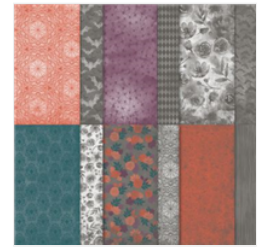
[Add to Cart](#)



[Halloween Magic Dies - 153565](#)

Price: \$31.00

[Add to Cart](#)



[Magic In This Night Designer Series Paper - 153517](#)

Price: \$11.50

[Add to Cart](#)



[1-1/2" \(3.8 Cm\) Metallic Mesh Ribbon - 153550](#)

Price: \$8.00

[Add to Cart](#)



[Iridescent Pearls - 153549](#)

Price: \$7.50

[Add to Cart](#)



[Tuxedo Black Memento Ink Pad - 132708](#)

Price: \$6.00

[Add to Cart](#)



[Stampin' Seal+ - 149699](#)

Price: \$12.00

[Add to Cart](#)



[Stampin' Seal - 152813](#)

Price: \$8.00

[Add to Cart](#)



[Paper Trimmer - 152392](#)

Price: \$25.00

[Add to Cart](#)



[Basic Black 8-1/2" X 11" Cardstock - 121045](#)

Price: \$8.75

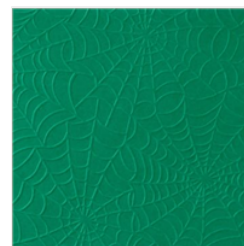
[Add to Cart](#)



[Smoky Slate 8-1/2" X 11" Cardstock - 131202](#)

Price: \$8.75

[Add to Cart](#)



[Cobwebs 3D Embossing Folder - 153578](#)

Price: \$9.00

[Add to Cart](#)



[Whisper White 8-1/2" X 11" Cardstock - 100730](#)

Price: \$9.75

[Add to Cart](#)

Happy Halloween Card

Stampin' Up! Magic In This Night!

Mary Fish
mary@stampinpretty.com
<http://stampinpretty.com>



[Stamparatus -
146276](#)

Price: \$49.00

Add to Cart



[Blackberry Bliss
Stampin' Blends
Combo Pack -
154877](#)

Price: \$9.00

Add to Cart



[Smoky Slate
Stampin' Blends
Combo Pack -
154904](#)

Price: \$9.00

Add to Cart



[Stampin'
Dimensionals -
104430](#)

Price: \$4.00

Add to Cart