

Share Sunshine COVID-19 Digital Download

Mary Fish
mary@stampinpretty.com
<http://stampinpretty.com>



1. Begin with a 4 1/4 x 5 1/2 card base of Whisper White Thick card stock.
2. Crop the filigree from the center of a 4 x 5 1/4 piece of Whisper White Thick card stock using the die (Well Written Dies) and a die-cutting and embossing machine.
3. Adhere the die-cut inside the negative die-cut space and to the card base with Stampin' Dimensionals.

Share Sunshine COVID-19 Digital Download

Mary Fish
mary@stampinpretty.com
<http://stampinpretty.com>



4. Print the sentiment on Whisper White card stock.
5. Crop with the Timeless Label Punch.
6. Adhere as shown with Stampin' Dimensionals.
7. POP OF PERSONALITY! Add Pearl Basic Jewels to the die-cut as shown.

Mary

 *click to PURCHASE* 
THE SHARE SUNSHINE PDF

Click for blog post 

Click to shop! 

Share Sunshine COVID-19 Digital Download

Mary Fish
mary@stampinpretty.com
<http://stampinpretty.com>



[Well Written Dies - 151816](#)

Price: \$40.00

[Add to Cart](#)



[Whisper White 8-1/2\" X 11\" Thick Cardstock - 140272](#)

Price: \$8.25

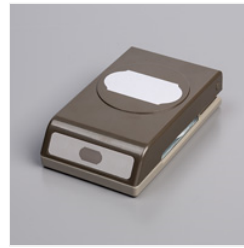
[Add to Cart](#)



[Whisper White 8-1/2\" X 11\" Cardstock - 100730](#)

Price: \$9.75

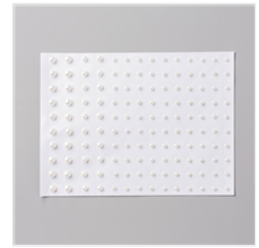
[Add to Cart](#)



[Timeless Label Punch - 149516](#)

Price: \$18.00

[Add to Cart](#)



[Pearl Basic Jewels - 144219](#)

Price: \$5.00

[Add to Cart](#)



[Stampin' Dimensionals - 104430](#)

Price: \$4.00

[Add to Cart](#)