

Holiday Haul Very Merry Note Card

Mary Fish

mary@stampinpretty.com

<http://stampinpretty.com>


stampin' pretty
a step-by-step tutorial



1. Begin by burnishing the fold of a Whisper White Note Card with a Bone Folder.
2. Use a Stampin' Up! Paper Trimmer to cut a piece of Christmastime is Here Designer Series Paper to 4 3/4 x 3 1/4.
3. Adhere to the note card base with Snail Adhesive.
4. Layer and adhere a 4 x 2 piece of Mossy Meadow card stock to a 3 3/4 x 2 1/4 piece of Whisper White card stock with Snail Adhesive.
5. Adhere to the card with Stampin' Dimensionals.
6. Use a Stampin' Up! [Stamaparatus](#) to position and stamp the truck (Mossy Meadow Classic Ink) and gift bag (Cherry Cobbler Classic Ink) onto a piece of Whisper White card stock.
7. Crop the image with the 2 1/4 Circle Punch.
8. Adhere to a 2 1/2 Scalloped Circle die-cut of Cherry Cobbler card stock (Layering Circle Dies) with Snail Adhesive.

Holiday Haul Very Merry Note Card

Mary Fish

mary@stampinpretty.com

<http://stampinpretty.com>



9. Use a [Stamaparatus](#) to stamp the sentiment (Itty Bitty Christmas) in Mossy Meadow ink onto a piece of Whisper White card stock.
10. Crop with the Timeless Label Punch, positioning the sentiment on the right-hand side.
11. Adhere both pieces as shown with Stampin' Dimensionals.
12. Tie a bow of Mossy Meadow Linen Thread (Magnolia Lane Ribbon Combo Pack).
13. Adhere as shown with a rolled Mini Glue dot.
14. **POP OF PERSONALITY!** Add three Cherry Cobbler Holiday Rhinestone Basic Jewels as shown.
15. Cut a piece of Wrapped in Plaid Designer Series Paper to 2 tall. Crop with a die-cutting and embossing machine and the envelope liner die from the Beautiful Layers Dies set. Adhere to the flap with Snail Adhesive.
16. **VIDEO TIP!** Learn how to use the Beautiful Layers Dies to create the Note Card Envelope Flap with ease in this [video here](#).

Mary

[Click for blog post](#)

[Click to shop!](#)

Holiday Haul Very Merry Note Card

Mary Fish

mary@stampinpretty.com

<http://stampinpretty.com>



[Holiday Haul Host Photopolymer Stamp Set](#)

Set

150536

Price: \$10.00

[Add to Cart](#)



[Itty Bitty Christmas Cling Stamp Set \(En\)](#)

150513

Price: \$22.00

[Add to Cart](#)



[Whisper White Note Cards & Envelopes](#)

131527

Price: \$7.00

[Add to Cart](#)

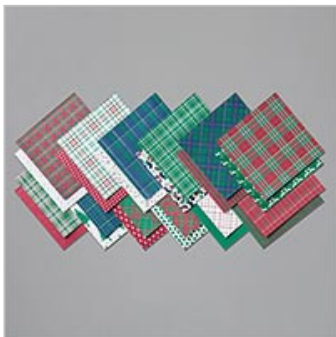


[Christmastime Is Here Specialty Designer Series Paper](#)

152154

Price: \$14.50

[Add to Cart](#)



[Wrapped In Plaid 6" X 6" \(15.2 X 15.2 Cm\) Specialty Designer Series Paper](#)

149596

Price: \$14.50

[Add to Cart](#)



Punch

143720

Price: \$18.00

[Add to Cart](#)

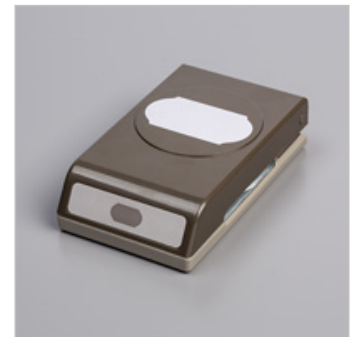


[Layering Circles Dies](#)

151770

Price: \$35.00

[Add to Cart](#)



[Timeless Label Punch](#)

149516

Price: \$18.00

[Add to Cart](#)

Holiday Haul Very Merry Note Card

Mary Fish

mary@stampinpretty.com

<http://stampinpretty.com>

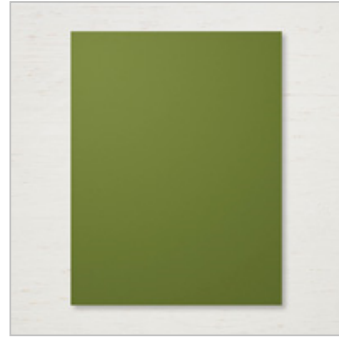


[Whisper White 8-1/2"](#)
[X 11" Cardstock](#)

100730

Price: \$9.75

[Add to Cart](#)



[Mossy Meadow 8-1/2"](#)
[X 11" Cardstock](#)

133676

Price: \$8.75

[Add to Cart](#)



[Cherry Cobbler](#)
[Classic Stampin' Pad](#)

147083

Price: \$7.50

[Add to Cart](#)



[Mossy Meadow](#)
[Classic Stampin' Pad](#)

147111

Price: \$7.50

[Add to Cart](#)



[Stamparatus](#)

146276

Price: \$49.00

[Add to Cart](#)



[Neutrals Stampin'](#)
[Write Markers](#)

147158

Price: \$30.00

[Add to Cart](#)



[Subtles Stampin'](#)
[Write Markers](#)

147156

Price: \$30.00

[Add to Cart](#)



[Magnolia Lane](#)
[Ribbon Combo Pack](#)

149485

Price: \$9.00

[Add to Cart](#)

Holiday Haul Very Merry Note Card

Mary Fish

mary@stampinpretty.com

<http://stampinpretty.com>



[Holiday Rhinestone](#)

[Basic Jewels](#)

150457

Price: \$6.00

[Add to Cart](#)



[Paper Trimmer](#)

152392

Price: \$25.00

[Add to Cart](#)



[Snail Adhesive](#)

104332

Price: \$7.00

[Add to Cart](#)



[Stampin' Dimensionals](#)

104430

Price: \$4.00

[Add to Cart](#)



[Mini Glue Dots](#)

103683

Price: \$5.25

[Add to Cart](#)



[Beautiful Layers Dies](#)

147043

Price: \$29.00

[Add to Cart](#)

[Add All to Cart](#)