

Candy boxes



I got this information from Catherine Pooler on how to make any size box.

Measure length, width and height of what you want to box.

FOR EXAMPLE:

For a (finished) treat box that will hold 6 Hershey Bliss Candies stacked 2 high and 3 length, the measurements are:

$$1 \frac{1}{8} \text{ (W)} \times 3 \frac{1}{2} \text{ (L)} \times 1 \text{ (H)}$$

Note: It's easiest to start with the bottom of the box.

BOX BOTTOM:

To figure out size of CS you need to cut for the bottom of the box, you add H+W+H and then H+L+H

$$H+W+H = 1 + 1 \frac{1}{8} + 1 = 3 \frac{1}{8}$$

$$H+L+H = 1 + 3 \frac{1}{2} + 1 = 5 \frac{1}{2}$$

*Card Stock for **bottom** of box is $3 \frac{1}{8} \times 5 \frac{1}{2}$*

BOX TOP:

To figure out size of CS you need to cut for the top of the box use the rule of 1/16's. This makes the top a little bit bigger so it fits just right.

Take your measurement of $3 \frac{1}{8}$ and add 1/16 of an inch to it = $3 \frac{3}{16}$'s

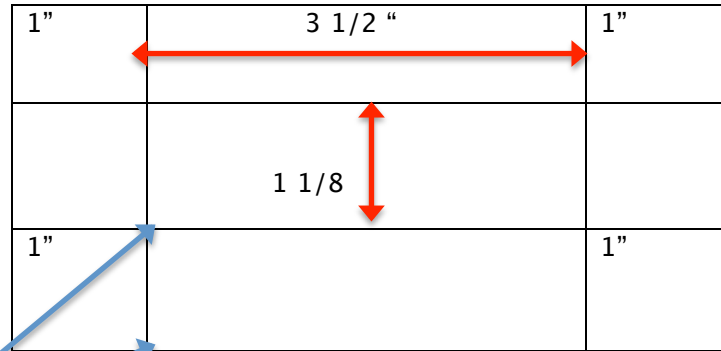
Take your measurement of $5 \frac{1}{2}$ and add 1/16 of an inch to it = $5 \frac{9}{16}$'s

To make it easier on yourself, once you figure out the bottom of the box measurement and if you are using a paper cutter that is marked in 16th measurements, just put your cardstock on the 3 1/8 mark and move it 1/16th bigger. Ditto on the 5 1/2 and move it 1/16th bigger.

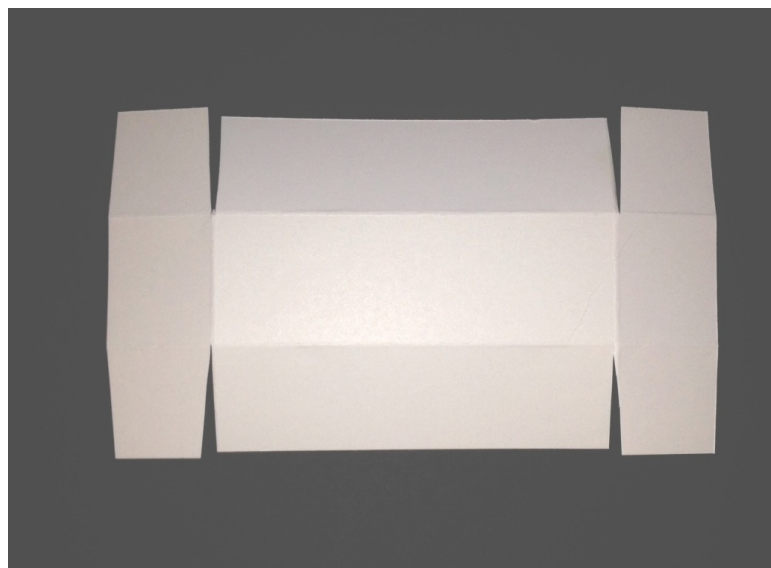
Card stock for top of the box is 3 3/16 x 5 9/16

SCORING:

Score all sides by the height - which is 1 inch. Do this for both the **BOTTOM** and **TOP** of the box.



Cut and trim all 4 corners. For better fitting of the box tabs, trim straight and then take a sliver out at an angle. See below for sample.



Put adhesive on the 4 outer tabs to put box bottom together. Repeat for box top.